

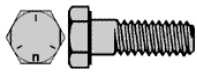
# Fasteners

**Columbus Fleet Industrial Supply**

**Canton Fleet Industrial Supply**

**Canton First Aid & Safety**





### 1/4-20 DIAMETER

USS	LGTH	QTY
106-006	1/2	100
106-008	5/8	100
106-010	3/4	100
106-012	1	100
106-014	1-1/4	100
106-016	1-1/2	100
106-018	1-3/4	100
106-020	2	100
106-022	2-1/4	100
106-024	2-1/2	50
106-026	2-3/4	50
106-028	3	50
106-030	3-1/4	50
106-032	3-1/2	25
106-036	4	25
106-038	4-1/2	25
106-040	5	25
106-042	5-1/2	25
106-044	6	25
106-048	7	25

### 5/16-18 DIAMETER

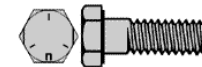
USS	LGTH	QTY
106-056	1/2	100
106-058	5/8	100
106-060	3/4	100
106-062	1	100
106-064	1-1/4	100
106-066	1-1/2	100
106-068	1-3/4	50
106-070	2	50
106-072	2-1/4	50
106-074	2-1/2	50
106-076	2-3/4	50
106-078	3	50
106-080	3-1/4	25
106-082	3-1/2	25
106-086	4	25
106-088	4-1/2	25
106-090	5	25
106-092	5-1/2	25
106-094	6	25

### 3/8-16 DIAMETER

USS	LGTH	QTY
106-106	1/2	100
106-108	5/8	100
106-110	3/4	100
106-112	1	100
106-114	1-1/4	100
106-116	1-1/2	100
106-118	1-3/4	50
106-120	2	50
106-122	2-1/4	50
106-124	2-1/2	50
106-126	2-3/4	50
106-128	3	50
106-130	3-1/4	25
106-132	3-1/2	25
106-136	4	25
106-138	4-1/2	25
106-140	5	25
106-142	5-1/2	25
106-144	6	25
106-146	6-1/2	25
106-148	7	25
106-149	9	25
106-151	11	Ea
106-153	12	Ea

### 7/16-14 DIAMETER

USS	LGTH	QTY
106-160	3/4	50
106-162	1	50
106-164	1-1/4	50
106-166	1-1/2	50
106-168	1-3/4	25
106-170	2	25
106-172	2-1/4	25
106-174	2-1/2	25
106-176	2-3/4	25
106-178	3	25
106-180	3-1/4	25
106-182	3-1/2	25
106-186	4	25
106-188	4-1/2	25
106-190	5	25
106-192	5-1/2	25
106-194	6	25



### 1/2-13 DIAMETER

USS	LGTH	QTY
106-212	1	50
106-214	1-1/4	50
106-216	1-1/2	50
106-218	1-3/4	25
106-220	2	25
106-222	2-1/4	25
106-224	2-1/2	25
106-226	2-3/4	25
106-228	3	25
106-230	3-1/4	25
106-232	3-1/2	25
106-236	4	15
106-238	4-1/2	15
106-240	5	15
106-242	5-1/2	10
106-244	6	10
106-246	6-1/2	10
106-248	7	10
106-250	7-1/2	10
106-252	8	5
106-253	8-1/2	5
106-254	9	5

### 9/16-12 DIAMETER

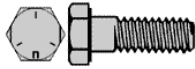
USS	LGTH	QTY
106-262	1	15
106-264	1-1/4	15
106-266	1-1/2	15
106-268	1-3/4	15
106-270	2	15
106-272	2-1/4	15
106-274	2-1/2	15
106-276	2-3/4	15
106-278	3	15
106-280	3-1/4	10
106-282	3-1/2	10
106-286	4	10
106-288	4-1/2	10
106-290	5	10

### 5/8-11 DIAMETER

USS	LGTH	QTY
106-312	1	15
106-314	1-1/4	15
106-316	1-1/2	15
106-318	1-3/4	15
106-320	2	15
106-322	2-1/4	15
106-324	2-1/2	15
106-326	2-3/4	15
106-328	3	15
106-330	3-1/4	10
106-332	3-1/2	10
106-336	4	10
106-338	4-1/2	10
106-340	5	10
106-342	5-1/2	10
106-344	6	10
106-346	6-1/2	5
106-348	7	5
106-352	8	5

### 3/4-10 DIAMETER

USS	LGTH	QTY
106-362	1	15
106-364	1-1/4	15
106-366	1-1/2	15
106-368	1-3/4	15
106-370	2	15
106-372	2-1/4	15
106-374	2-1/2	15
106-376	2-3/4	10
106-378	3	10
106-380	3-1/4	10
106-382	3-1/2	10
106-386	4	10
106-388	4-1/2	10
106-390	5	10
106-392	5-1/2	10
106-394	6	10
106-396	6-1/2	5
106-398	7	5
106-402	8	5
106-404	10	5

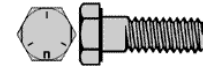


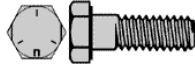
### 7/8-9 DIAMETER

USS	LGTH	QTY
106-416	1-1/2	5
106-418	1-3/4	5
106-420	2	5
106-422	2-1/4	5
106-424	2-1/2	5
106-426	2-3/4	5
106-428	3	5
106-430	3-1/4	5
106-432	3-1/2	5
106-436	4	5
106-438	4-1/2	5
106-440	5	5
106-442	5-1/2	5
106-444	6	5
106-445	6-1/2	5
106-451	8	5
106-456	9	5

### 1-8 DIAMETER

USS	LGTH	QTY
106-466	1-1/2	5
106-468	1-3/4	5
106-470	2	5
106-474	2-1/2	5
106-478	3	5
106-482	3-1/2	5
106-486	4	5
106-488	4-1/2	5
106-490	5	5
106-492	5-1/2	5
106-494	6	5
106-502	9	5
106-505	12	5





**1/4-28 DIAMETER**

USS	LGTH	QTY
106-506	1/2	50
106-508	5/8	50
106-510	3/4	50
106-512	1	50
106-514	1-1/4	50
106-516	1-1/2	50
106-518	1-3/4	50
106-520	2	50
106-522	2-1/4	25
106-524	2-1/2	25
106-526	2-3/4	25
106-528	3	25
106-530	3-1/4	25
106-532	3-1/2	25
106-536	4	25
106-538	4-1/2	25
106-540	5	25

**3/8-24 DIAMETER**

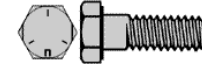
USS	LGTH	QTY
106-606	1/2	50
106-608	5/8	50
106-610	3/4	50
106-612	1	50
106-614	1-1/4	50
106-616	1-1/2	50
106-618	1-3/4	25
106-620	2	25
106-622	2-1/4	25
106-624	2-1/2	25
106-626	2-3/4	25
106-628	3	25
106-630	3-1/4	25
106-632	3-1/2	25
106-636	4	25
106-638	4-1/2	25
106-640	5	25
106-642	5-1/2	25
106-644	6	25

**5/16-24 DIAMETER**

USS	LGTH	QTY
106-556	1/2	50
106-558	5/8	50
106-560	3/4	50
106-562	1	50
106-564	1-1/4	50
106-566	1-1/2	50
106-568	1-3/4	50
106-570	2	50
106-572	2-1/4	25
106-574	2-1/2	25
106-576	2-3/4	25
106-578	3	25
106-580	3-1/2	25
106-582	4	25
106-586	4-1/2	25
106-588	5	25

**7/16-20 DIAMETER**

USS	LGTH	QTY
106-660	3/4	25
106-662	1	25
106-664	1-1/4	25
106-666	1-1/2	25
106-668	1-3/4	25
106-670	2	25
106-672	2-1/4	25
106-674	2-1/2	25
106-676	2-3/4	25
106-678	3	25
106-680	3-1/4	25
106-682	3-1/2	25
106-686	4	15
106-688	4-1/2	15
106-690	5	15
106-692	5-1/2	15
106-694	6	15



**1/2-20 DIAMETER**

USS	LGTH	QTY
106-710	3/4	25
106-712	1	25
106-714	1-1/4	25
106-716	1-1/2	25
106-718	1-3/4	25
106-720	2	25
106-722	2-1/4	25
106-724	2-1/2	25
106-726	2-3/4	25
106-728	3	25
106-730	3-1/4	25
106-732	3-1/2	25
106-736	4	15
106-738	4-1/2	15
106-740	5	15
106-742	5-1/2	5
106-744	6	5
106-746	6-1/2	5
106-748	7	5

**9/16-18 DIAMETER**

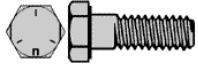
USS	LGTH	QTY
106-762	1	15
106-764	1-1/4	15
106-766	1-1/2	15
106-768	1-3/4	15
106-770	2	15
106-772	2-1/4	15
106-774	2-1/2	15
106-776	2-3/4	15
106-778	3	15
106-782	3-1/2	10
106-786	4	10
106-788	4-1/2	10
106-790	5	10

**5/8-18 DIAMETER**

USS	LGTH	QTY
106-812	1	15
106-814	1-1/4	15
106-816	1-1/2	15
106-818	1-3/4	15
106-820	2	15
106-822	2-1/4	15
106-824	2-1/2	15
106-826	2-3/4	15
106-828	3	15
106-830	3-1/4	10
106-832	3-1/2	10
106-836	4	10
106-838	4-1/2	10
106-840	5	10
106-842	5-1/2	10
106-844	6	10
106-846	6-1/2	5
106-848	7	5
106-852	8	5

**3/4-16 DIAMETER**

USS	LGTH	QTY
106-862	1	15
106-864	1-1/4	15
106-866	1-1/2	15
106-868	1-3/4	15
106-870	2	15
106-872	2-1/4	15
106-874	2-1/2	15
106-876	2-3/4	10
106-878	3	10
106-880	3-1/4	10
106-882	3-1/2	10
106-886	4	10
106-888	4-1/2	10
106-890	5	10
106-892	5-1/2	10
106-894	6	10
106-896	6-1/2	5
106-898	7	5
106-802	8	5

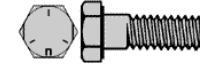


**7/8-14 DIAMETER**

USS	LGTH	QTY
106-916	1-1/2	5
106-918	1-3/4	5
106-920	2	5
106-922	2-1/4	5
106-924	2-1/2	5
106-926	2-3/4	5
106-928	3	5
106-930	3-1/4	5
106-932	3-1/2	5
106-936	4	5
106-938	4-1/2	5
106-940	5	5
106-942	5-1/2	5
106-944	6	5

**1-14 DIAMETER**

USS	LGTH	QTY
106-966	1-1/2	5
106-968	1-3/4	5
106-970	2	5
106-974	2-1/2	5
106-978	3	5
106-982	3-1/2	5
106-986	4	5
106-988	4-1/2	5
106-990	5	5
106-992	5-1/2	5
106-994	6	5





**1/4-20 DIAMETER**

USS	LGTH	QTY
107-008	1/2	100
107-010	3/4	100
107-012	1	100
107-014	1-1/4	100
107-016	1-1/2	100
107-018	1-3/4	100
107-020	2	100
107-022	2-1/4	100
107-024	2-1/2	50
107-026	2-3/4	50
107-028	3	50
107-030	3-1/4	50
107-032	3-1/2	25
107-034	3-3/4	25
107-036	4	25
107-038	4-1/2	25
107-040	5	25
107-044	5-1/2	25
107-044	6	25
107-048	7	25

**3/8-16 DIAMETER**

USS	LGTH	QTY
107-108	1/2	100
107-110	3/4	100
107-112	1	100
107-114	1-1/4	100
107-116	1-1/2	100
107-118	1-3/4	50
107-120	2	50
107-122	2-1/4	50
107-124	2-1/2	50
107-126	2-3/4	50
107-128	3	50
107-130	3-1/4	25
107-132	3-1/2	25
107-136	4	25
107-138	4-1/2	25
107-140	5	25
107-142	5-1/2	25
107-144	6	25
107-146	6-1/2	25
107-148	7	25
107-150	7-1/2	25
107-152	8	10
107-1558	10	10

**1/2-13 DIAMETER**

USS	LGTH	QTY
107-210	3/4	50
107-212	1	50
107-214	1-1/4	50
107-216	1-1/2	50
107-218	1-3/4	25
107-220	2	25
107-222	2-1/4	25
107-224	2-1/2	25
107-226	2-3/4	25
107-228	3	25
107-230	3-1/4	25
107-232	3-1/2	25
107-234	3-3/4	15
107-236	4	15
107-237	4-1/4	15
107-238	4-1/2	15
107-7239	4-3/4	15
107-240	5	15
107-242	5-1/2	15
107-244	6	15
107-246	6-1/2	10
107-248	7	10
107-250	7-1/2	10
107-252	8	5
107-253	8-1/2	5
107-254	9	5

**5/8-11 DIAMETER**

USS	LGTH	QTY
107-312	1	15
107-314	1-1/4	15
107-316	1-1/2	15
107-318	1-3/4	15
107-320	2	15
107-322	2-1/4	15
107-324	2-1/2	15
107-326	2-3/4	15
107-328	3	15
107-330	3-1/4	10
107-332	3-1/2	10
107-336	4	10
107-338	4-1/2	10
107-340	5	10
107-342	5-1/2	10
107-344	6	10
107-346	6-1/2	5
107-348	7	5
107-350	7-1/2	5
107-352	8	5
107-353	8-1/2	5
107-354	9	5
107-355	9-1/2	5
107-356	10	ea

**7/16-14 DIAMETER**

USS	LGTH	QTY
107-160	3/4	50
107-162	1	50
107-164	1-1/4	50
107-166	1-1/2	50
107-168	1-3/4	25
107-170	2	25
107-172	2-1/4	25
107-174	2-1/2	25
107-176	2-3/4	25
107-178	3	25
107-180	3-1/4	25
107-182	3-1/2	25
107-186	4	25
107-188	4-1/2	25
107-190	5	25
107-192	5-1/2	25
107-194	6	25
107-196	6-1/2	25
107-198	7	10
107-202	8	10

**5/16-18 DIAMETER**

USS	LGTH	QTY
107-058	1/2	100
107-060	3/4	100
107-062	1	100
107-064	1-1/4	100
107-066	1-1/2	100
107-068	1-3/4	50
107-070	2	50
107-072	2-1/4	50
107-074	2-1/2	50
107-076	2-3/4	50
107-078	3	50
107-080	3-1/4	25
107-082	3-1/2	25
107-086	4	25
107-088	4-1/2	25
107-090	5	25
107-092	5-1/2	25
107-094	6	25

**9/16-12 DIAMETER**

USS	LGTH	QTY
107-262	1	15
107-264	1-1/4	15
107-266	1-1/2	15
107-268	1-3/4	15
107-270	2	15
107-272	2-1/4	15
107-274	2-1/2	15
107-276	2-3/4	15
107-278	3	15
107-280	3-1/4	10
107-282	3-1/2	10
107-286	4	10
107-288	4-1/2	10
107-290	5	10
107-292	5-1/2	10
107-294	6	10
107-296	6-1/2	10
107-298	7	10

**3/4-10 DIAMETER**

USS	LGTH	QTY
107-362	1	15
107-364	1-1/4	15
107-366	1-1/2	15
107-368	1-3/4	15
107-370	2	15
107-372	2-1/4	15
107-374	2-1/2	15
107-376	2-3/4	10
107-378	3	10
107-380	3-1/4	10
107-382	3-1/2	10
107-386	4	10
107-388	4-1/2	10
107-390	5	10
107-392	5-1/2	10
107-394	6	10
107-396	6-1/2	5
107-398	7	5
107-402	8	5
107-404	9	5
107-406	10	ea



### 7/8-9 DIAMETER

USS	LGTH	QTY
107-416	1-1/2	5
107-418	1-3/4	5
107-420	2	5
107-422	2-1/4	5
107-424	2-1/2	5
107-426	2-3/4	5
107-428	3	5
107-430	3-1/4	5
107-432	3-1/2	5
107-436	4	5
107-438	4-1/2	5
107-440	5	5
107-442	5-1/2	5
107-444	6	5
107-446	6-1/2	5
107-448	7	5
107-450	7-1/2	5
107-452	8	5
107-453	8-1/2	5
107-454	9	5
107-455	9-1/2	5
107-456	10	5

### 1-8 DIAMETER

USS	LGTH	QTY
107-470	2	5
107-472	2-1/4	5
107-474	2-1/2	5
107-478	3	5
107-482	3-1/2	5
107-486	4	5
107-488	4-1/2	5
107-490	5	5
107-492	5-1/2	5
107-494	6	5
107-496	6-1/2	5
107-498	7	5
107-500	7-1/2	5
107-502	8	5
107-503	9	5
107-504	10	5



### 1-1/8-7 DIAMETER

USS	LGTH	QTY
107-5043	3	EA
107-5044	4	EA
107-5045	5	EA
107-5046	6	EA
107-5047	7	EA
107-5048	8	EA

### 1-1/2-6 DIAMETER

USS	LGTH	QTY
107-5060	10	EA

**1/4-28 DIAMETER**

USS	LGTH	QTY
107-506	1/2	50
107-508	5/8	50
107-510	3/4	50
107-512	1	50
107-514	1-1/4	50
107-516	1-1/2	50
107-518	1-3/4	50
107-520	2	50
107-522	2-1/4	25
107-524	2-1/2	25
107-526	2-3/4	25
107-528	3	25
107-530	3-1/4	25
107-532	3-1/2	25
107-536	4	25
107-538	4-1/2	25
107-540	5	25
107-544	5-1/2	25
107-544	6	25

**5/16-24 DIAMETER**

USS	LGTH	QTY
107-556	1/2	50
107-558	5/8	50
107-560	3/4	50
107-562	1	50
107-564	1-1/4	50
107-566	1-1/2	50
107-568	1-3/4	50
107-570	2	50
107-572	2-1/4	25
107-574	2-1/2	25
107-576	2-3/4	25
107-578	3	25
107-580	3-1/4	25
107-582	3-1/2	25
107-586	4	25
107-588	4-1/2	25
107-590	5	25
107-592	5-1/2	25
107-594	6	25

**3/8-24 DIAMETER**

USS	LGTH	QTY
107-606	1/2	50
107-608	5/8	50
107-610	3/4	50
107-612	1	50
107-614	1-1/4	50
107-616	1-1/2	50
107-618	1-3/4	25
107-620	2	25
107-622	2-1/4	25
107-624	2-1/2	25
107-626	2-3/4	25
107-628	3	25
107-630	3-1/4	25
107-632	3-1/2	25
107-636	4	25
107-638	4-1/2	25
107-640	5	25
107-642	5-1/2	25
107-644	6	25

**7/16-20 DIAMETER**

USS	LGTH	QTY
107-660	3/4	25
107-662	1	25
107-664	1-1/4	25
107-666	1-1/2	25
107-668	1-3/4	25
107-670	2	25
107-672	2-1/4	25
107-674	2-1/2	25
107-676	2-3/4	25
107-678	3	25
107-680	3-1/4	25
107-682	3-1/2	25
107-684	3-3/4	15
107-686	4	15
107-688	4-1/2	15
107-690	5	15
107-692	5-1/2	15
107-694	6	15

**1/2-20 DIAMETER**

USS	LGTH	QTY
107-710	3/4	25
107-712	1	25
107-714	1-1/4	25
107-716	1-1/2	25
107-718	1-3/4	25
107-720	2	25
107-722	2-1/4	25
107-724	2-1/2	25
107-726	2-3/4	25
107-728	3	25
107-730	3-1/4	25
107-732	3-1/2	25
107-734	3-3/4	15
107-736	4	15
107-738	4-1/2	15
107-740	5	15
107-742	5-1/2	10
107-744	6	10
107-746	6-1/2	10
107-748	7	10
107-752	8	10

**9/16-18 DIAMETER**

USS	LGTH	QTY
107-762	1	15
107-764	1-1/4	15
107-766	1-1/2	15
107-768	1-3/4	15
107-770	2	15
107-772	2-1/4	15
107-774	2-1/2	15
107-776	2-3/4	15
107-778	3	15
107-782	3-1/2	10
107-786	4	10
107-788	4-1/2	10
107-790	5	10
107-792	5-1/2	10
107-794	6	10

**5/8-18 DIAMETER**

USS	LGTH	QTY
107-812	1	15
107-814	1-1/4	15
107-816	1-1/2	15
107-818	1-3/4	15
107-820	2	15
107-822	2-1/4	15
107-824	2-1/2	15
107-826	2-3/4	15
107-828	3	15
107-830	3-1/4	10
107-832	3-1/2	10
107-836	4	10
107-838	4-1/2	10
107-840	5	10
107-842	5-1/2	10
107-844	6	10
107-846	6-1/2	5
107-848	7	5
107-850	7-1/2	5
107-852	8	5
107-854	8-1/2	5
107-860	10	Ea

**3/4-16 DIAMETER**

USS	LGTH	QTY
107-862	1	15
107-864	1-1/4	15
107-866	1-1/2	15
107-868	1-3/4	15
107-870	2	15
107-872	2-1/4	15
107-874	2-1/2	15
107-876	2-3/4	10
107-878	3	10
107-880	3-1/4	10
107-882	3-1/2	10
107-886	4	10
107-888	4-1/2	10
107-890	5	10
107-892	5-1/2	10
107-894	6	10
107-896	6-1/2	5
107-898	7	5
107-900	7-1/2	5
107-902	8	5



### 7/8-14 DIAMETER

USS	LGTH	QTY
107-916	1-1/2	5
107-918	1-3/4	5
107-920	2	5
107-922	2-1/4	5
107-924	2-1/2	5
107-926	2-3/4	5
107-928	3	5
107-930	3-1/4	5
107-932	3-1/2	5
107-934	3-3/4	5
107-936	4	5
107-938	4-1/2	5
107-940	5	5
107-942	5-1/2	5
107-944	6	5
107-946	6-1/2	5
107-948	7	5
107-950	7-1/2	5
107-952	8	5

### 1-14 DIAMETER

USS	LGTH	QTY
107-966	1-1/2	5
107-970	2	5
107-974	2-1/2	5
107-978	3	5
107-982	3-1/2	5
107-986	4	5
107-988	4-1/2	5
107-990	5	5
107-992	5-1/2	5
107-994	6	5
107-996	6-1/2	5
107-998	7	5
108-502	8	5
108-004	9	5
108-006	10	5



### HEX NUTS GRADE 5 PLATED



#### GRADE 5 USS NUTS

Part#	SIZE	QTY
118-200	1/4-20	100
118-201	5/16-18	100
118-202	3/8-16	100
118-203	7/16-14	50
118-205	1/2-13	50
118-206	9/16-12	25
118-207	5/8-11	25
118-208	3/4-10	20
118-209	7/8-9	15
118-210	1-8	10
118-211	1-1/8-7	5
118-212	1-1/4-6	5
118-213	1-3/8-6	5
118-217	1-1/2-6	3

#### GRADE 5 SAE NUTS

Part#	SIZE	QTY
118-220	1/4-28	100
118-221	5/16-24	100
118-222	3/8-24	100
118-223	7/16-20	50
118-225	1/2-20	50
118-226	9/16-18	25
118-227	5/8-18	25
118-228	3/4-16	20
118-229	7/8-14	15
118-230	1-14	10
118-231	1-1/8-12	5
118-232	1-1/4-12	5
118-233	1-3/8-12	5
118-237	1-1/2-12	3

### HEX NUTS GRADE 8 PLATED



#### GRADE 8 USS NUTS

Part#	SIZE	QTY
118-240	1/4-20	100
118-241	5/16-18	100
118-242	3/8-16	100
118-243	7/16-14	50
118-244	1/2-13	50
118-245	9/16-12	25
118-246	5/8-11	25
118-247	3/4-10	20
118-248	7/8-9	15
118-249	1-8	10
118-250	1-1/8-7	5
118-251	1-1/4-6	5
118-352	1-3/8-6	4
118-353	1-1/2-6	3
118-258	2-4-1/2	EA
118-259	2 1/2-4	EA

#### GRADE 8 SAE NUTS

Part#	SIZE	QTY
118-260	1/4-28	100
118-261	5/16-24	100
118-262	3/8-24	100
118-263	7/16-20	50
118-264	1/2-20	25
118-265	9/16-18	25
118-266	5/8-18	25
118-267	3/4-16	20
118-268	7/8-14	15
118-269	1-14	10
118-270	1-1/8-12	5
118-271	1-1/4-12	5
118-272	1-3/8-12	5
118-373	1-1/2-12	3

### LOW CARBON NYLON LOCKNUTS



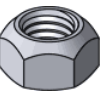
#### USS NYLON NUTS

Part#	SIZE	QTY
121-120	6-32	100
121-125	10-24	100
121-137	12-24	50
118-310	1/4-20	100
118-311	5/16-18	100
118-312	3/8-16	50
118-313	7/16-14	25
118-314	1/2-13	25
118-315	9/16-12	25
118-316	5/8-11	25
118-317	3/4-10	20
118-318	7/8-9	15
118-319	1-8	10

#### SAE NYLON NUTS

Part#	SIZE	QTY
121-122	8-32	100
121-135	10-32	100
118-320	1/4-28	100
118-321	5/16-24	100
118-322	3/8-24	50
118-323	7/16-20	25
118-324	1/2-20	25
118-325	9/16-18	25
118-326	5/8-18	25
118-327	3/4-16	20
118-328	7/8-14	15
118-329	1-14	10

### STOVER LOCKNUTS



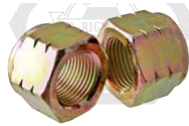
#### USS STOVER NUTS

Part#	SIZE	QTY
118-330	1/4-20	100
118-331	5/16-18	100
118-332	3/8-16	100
118-333	7/16-14	50
118-334	1/2-13	25
118-335	9/16-12	25
118-336	5/8-11	25
118-337	3/4-10	20
118-338	7/8-8	15
118-339	1-8	10
118-3392	1-1/8-7	5
118-3393	1-1/4-7	5

#### SAE STOVER NUTS

Part#	SIZE	QTY
118-340	1/4-28	100
118-341	5/16-24	100
118-342	3/8-24	50
118-343	7/16-20	25
118-344	1/2-20	25
118-345	9/16-18	25
118-346	5/8-18	25
118-347	3/4-16	20
118-348	7/8-14	15
118-349	1-14	15
118-352	1-1/8-12	5
118-360	1-1/4-12	5

**GRADE 8 NYLON LOCKNUTS**



**USS NYLON NUTS**

Part#	SIZE	QTY
118-910	1/4-20	100
118-911	5/16-18	100
118-912	3/8-16	50
118-913	7/16-14	25
118-914	1/2-13	25
118-915	9/16-12	25
118-916	5/8-11	25
118-917	3/4-10	20
118-918	7/8-9	15
118-919	1-8	10
118-920	1-1/8-7	10
118-921	1-1/4-7	10
118-923	1-3/8-6	5
118-925	1-1/2-6	5

**SAE NYLON NUTS**

Part#	SIZE	QTY
118-940	1/4-28	100
118-941	5/16-24	100
118-942	3/8-24	50
118-943	7/16-20	25
118-944	1/2-20	25
118-945	9/16-18	25
118-946	5/8-18	25
118-947	3/4-16	20
118-948	7/8-14	15
118-950	1-14	10
118-952		10
118-954		10
118-956	1-3/8-12	5
118-958	1-1/2-12	5

**2-H HEAVY DUTY GRADE 8 NUTS**



**USS 2-H NUTS**

Part#	SIZE	QTY
118-370	1/4-20	50
118-371	5/16-18	50
118-372	3/8-16	50
118-373	7/16-14	25
118-374	1/2-13	25
118-375	9/16-12	25
118-376	5/8-11	25
118-377	3/4-10	20
118-378	7/8-9	15
118-379	1-8	10
118-380	1-1/8-7	5
118-381	1-1/4-7	5
118-382	1-1/2-6	5

**GRADE 5 THIN NYLON LOCKNUTS**



**USS NYLON THIN NUTS**

Part#	SIZE	QTY
118-289	1/4-20	50
118-290	5/16-18	50
118-291	3/8-16	50
118-292	7/16-14	50
118-293	1/2-13	25
118-294	9/16-12	25

**SAE NYLON THIN NUTS**

Part#	SIZE	QTY
118-298	1/4-28	50
118-299	5/16-24	50
118-300	3/8-24	50
118-301	7/16-20	50
118-302	1/2-20	25
118-303	9/16-18	25
118-304	5/8-18	25
118-305	3/4-16	25

**HEAVY DUTY HIGH-NUTS GRADE 8 NUTS**



**SAE HIGH NUTS**

Part#	SIZE	QTY
119-244	3/8-24	25
119-246	7/16-20	20
119-248	1/2-20	15
119-250	9/16-18	10
119-252	5/8-18	10
119-254	3/4-16	10
119-256	7/8-14	10
119-258	1-14	5
119-260	1-1/8-12	5
119-262	1-1/4-12	5

**GRADE 5 / 8 LOCK WASHERS**



**GRADE 5 LOCKS**

Part#	SIZE	QTY
118-404	1/4	200
118-405	5/16	200
118-406	3/8	100
118-407	7/16	100
118-408	1/2	100
118-409	9/16	100
118-410	5/8	50
118-411	3/4	50
118-412	7/8	25
118-413	1	25
118-414	1-1/8	5
118-415	1-1/4	5

**GRADE 8 LOCKS**

Part#	SIZE	QTY
118-504	1/4	200
118-505	5/16	200
118-506	3/8	100
118-507	7/16	50
118-508	1/2	50
118-509	9/16	50
118-510	5/8	50
118-511	3/4	25
118-512	7/8	25
118-513	1	25
118-514	1-1/8	5
118-515	1-1/4	5
118-517	1-1/2	5
118-522	2	5

**GRADE 8 FLAT WASHERS**



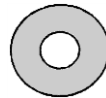
**USS GD 8 FLATS**

Part#	SIZE	QTY
118-524	1/4	100
118-525	5/16	100
118-526	3/8	100
118-527	7/16	50
118-528	1/2	50
118-529	9/16	25
118-530	5/8	25
118-531	3/4	20
118-532	7/8	15
118-533	1	10
118-534	1-1/8	10
118-535	1-1/4	5
118-536	1-3/8	5
118-537	1-1/2	5
<b>118-539</b>	<b>2-1/2</b>	<b>EA</b>

**SAE GD 8 FLATS**

Part#	SIZE	QTY
118-544	1/4	200
118-545	5/16	150
118-546	3/8	100
118-547	7/16	50
118-548	1/2	50
118-549	9/16	25
118-550	5/8	25
118-551	3/4	20
118-552	7/8	15
118-553	1	10
118-554	1-1/8	10
118-555	1-1/4	10
118-556	1-1/2	10
118-558	1-3/4	5
118-560	2	5

**GRADE 5 FLAT WASHERS**



**USS GD 5 FLATS**

Part#	SIZE	QTY
118-421	1/4	150
118-422	5/16	100
118-423	3/8	100
118-424	7/16	100
118-425	1/2	50
118-426	9/16	50
118-427	5/8	25
118-428	3/4	25
118-429	7/8	20
118-430	1	10
118-431	1-1/8	10
118-432	1-1/4	10
118-433	1-1/2	10

**SAE GD 5 FLATS**

Part#	SIZE	QTY
118-441	1/4	250
118-442	5/16	200
118-443	3/8	100
118-444	7/16	100
118-445	1/2	50
118-446	9/16	50
118-447	5/8	25
118-448	3/4	25
118-449	7/8	20
118-450	1	10

**NT2 THICK FLAT WASHERS**



**NT2 THICK FLATS**

Part# USS	Part# SAE	SIZE	QTY
118-624	118-644	1/4	100
118-625	118-645	5/16	100
118-626	118-646	3/8	100
118-627	118-647	7/16	50
118-628	118-648	1/2	50
118-629	118-649	9/16	25
118-630	118-650	5/8	25
118-631	118-651	3/4	20
118-632	118-652	7/8	15

**L-9 SAE FLAT WASHERS**



**L-9 GD 9 FLATS**

Part# USS	Part# SAE	SIZE	QTY
118-876	118-836	1/4	50
118-878	118-838	5/16	50
118-880	118-840	3/8	50
118-882	118-842	7/16	50
118-884	118-844	1/2	50
118-886	118-846	9/16	25
118-888	118-848	5/8	25
118-890	118-850	3/4	20
118-892	118-852	7/8	15
118-894	118-854	1	10
118-896	118-856	1-1/8	5
118-898	118-858	1-1/4	5
118-902	118-860	1-1/2	5
118-904	118-862	1-3/4	5
118-906	118-864	2	5

**NTX THICK FLAT WASHERS**



**SAE NTX EXTRA THICK FLATS**

Part#	SIZE	QTY
118-748	1/2	25
118-749	9/16	25
118-750	5/8	25
118-751	3/4	20
118-752	7/8	15
118-753	1	15

**18 GA MACHINERY BUSHINGS**

Part#	SIZE	QTY
119-028	1 X 5/8	25
119-030	1-1/4 X 3/4	25
119-032	1-3/8 X 7/8	25



**14 GA MACHINERY BUSHINGS**

Part#	SIZE	QTY
119-058	1-3/8 X 7/8	25
119-060	1-1/2 X 1	25
119-062	1-3/4 X 1-1/8	25
119-064	1-7/8 X 1-1/4	25
119-066	2-1/4 X 1-1/2	25
119-068	2-1/2 X 1-3/4	10
119-070	2-1/8 X 1-3/8	10
119-072	2-1/4 X 1-1/2	10
119-076	2-1/2 X 1-3/4	10
119-078	2-7/8 X 1-7/8	10
119-080	3 X 2	10

**10 GA MACHINERY BUSHINGS**

Part#	SIZE	QTY
119-124	1-3/8 X 7/8	25
119-126	1-1/2 X 1	25
119-128	1-3/4 X 1-1/8	25
119-130	1-7/8 X 1-1/4	25
119-134	2-1/4 X 1-1/2	10
119-138	2-1/2 X 1-3/4	10

### ROD COUPLING NUTS



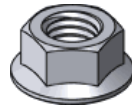
#### ROD COUPLING NUTS

Part#	SIZE	QTY
119-549	1/4-20	10
119-550	5/16-18	10
119-551	3/8-16	10
119-552	7/16-13	5
119-553	1/2-13	5
119-555	5/8-11	5
119-556	3/4-10	5
119-558	7/8-9	5

#### ROD COUPLING NUTS

Part#	SIZE	QTY
119-572	1/4-28	10
119-574	5/16-24	10
119-576	3/8-24	10
119-578	7/16-20	5
119-580	1/2-20	5
119-584	5/8-18	5

### SERRATED FLANGE NUTS



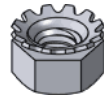
#### USS FLANGE NUTS

Part#	SIZE	QTY
120-116	10-24	100
120-118	1/4-20	50
120-120	5/16-18	50
120-122	3/8-16	50
120-123	7/16-14	25
120-124	1/2-13	25

#### SAE FLANGE NUTS

Part#	SIZE	QTY
120-158	8-32	100
120-160	1/4-28	50
120-161	5/16-24	50
120-162	3/8-24	50
120-163	7/16-20	25
120-164	1/2-20	25

### KEEP NUTS



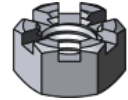
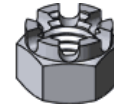
#### USS KEEP NUTS

Part#	SIZE	QTY
120-212	10-24	100
120-216	12-24	100
120-218	1/4-20	100
120-220	5/16-18	50
120-222	3/8-16	50

#### SAE KEEP NUTS

Part#	SIZE	QTY
120-208	6-32	100
120-210	8-32	100
120-214	10-32	100
120-260	1/4-28	100
120-261	5/16-24	50
120-262	3/8-16	50

### CASTLE / SLOTTED NUTS



#### GRADE 2 CASTLE NUTS

Part#	SIZE	QTY
120-305	5/16-18	20
120-306	3/8-16	20
120-307	7/16-14	20
120-308	1/2-13	20
120-309	9/16-12	10
120-310	5/8-11	10
120-311	3/4-10	10
120-312	7/8-9	10
120-313	1-8	10
120-314	1-1/8-7	5
120-315	1-1/4-7	5
120-324	1/4-28	20
120-325	5/16-24	20
120-326	3/8-24	20
120-327	7/16-20	20
120-328	1/2-20	20
120-329	9/16-18	10
120-330	5/8-18	10
120-331	3/4-16	10
120-332	7/8-14	10
120-333	1-14	10
120-334	1-1/8-12	5
120-335	1-1/4-12	5

#### GRADE 2 SLOTTED NUTS

Part#	SIZE	QTY
120-354	1/4-20	20
120-355	5/16-18	20
120-356	3/8-16	20
120-357	7/16-14	20
120-358	1/2-13	20
120-359	9/16-12	10
120-360	5/8-11	10
120-361	3/4-10	10
120-362	7/8-9	10
120-363	1-8	10
120-364	1-1/8-7	5
120-365	1-1/4-7	5
120-376	3/8-24	20
120-377	7/16-20	20
120-378	1/2-20	20
120-379	9/16-18	10
120-380	5/8-18	10
120-381	3/4-16	10
120-382	7/8-14	10
120-383	1-14	10
120-384	1-1/8-12	5
120-385	1-1/4-12	5

### WING / SQUARE NUTS



#### WING NUTS

Part#	SIZE	QTY
120-554	6-32	50
120-556	8-32	50
120-558	10-32	50
120-560	10-24	50
120-561	12-24	50
120-563	1/4-20	50
120-564	5/16-18	50
120-565	3/8-16	25
120-567	1/2-13	25

#### SQUARE MACH NUT

Part#	SIZE	QTY
120-420	10-24	100
120-425	1/4-20	25
120-427	5/16-18	25
120-429	3/8-16	25
120-431	7/16-14	25
120-433	1/2-13	25
120-437	5/8-11	25
120-439	3/4-10	25

**MACHINE SCREW HEX JAM NUTS**



**USS MACHINE NUTS**

Part#	SIZE	QTY
121-012	10-24	100
121-016	12-24	100
121-018	1/4-20	50
121-019	5/16-18	50
121-020	3/8-16	50
121-021	7/16-14	50
121-022	1/2-13	25
121-023	9/16-12	20
121-024	5/8-11	20
121-025	3/4-10	20
121-026	7/8-9	10
121-027	1-8	10
121-030	1-1/4-7	5

**SAE MACHINE NUTS**

Part#	SIZE	QTY
121-000	2-56	100
121-002	4-36	100
121-004	4-40	100
121-006	5-40	100
121-008	6-32	100
121-010	8-32	100
121-014	10-32	100
121-050	1/4-28	50
121-051	5/16-24	50
121-052	3/8-24	50
121-053	7/16-20	50
121-054	1/2-20	25
121-055	9/16-18	20
121-056	5/8-18	20
121-057	3/4-16	20
121-058	7/8-14	10
121-059	1-14	10
121-060	1-1/8-12	10
121-061	1-1/4-12	5
121-062	1-1/2-12	5

**MACHINE NYLON NUTS**



Part#	SIZE	QTY
121-120	6-32	100
121-122	8-32	100
121-125	10-24	100
121-135	10-32	100
121-137	12-24	50

**MACHINE FLATS / LOCKS**



**MACHINE FLATS**

Part#	SIZE	QTY
121-204	#6	200
121-205	#8	200
121-206	#10	200
121-207	#12	100
121-208	#14	100

**MACHINE LOCKS**

Part#	SIZE	QTY
121-324	#6	200
121-325	#8	200
121-326	#10	200
121-327	#12	100
121-328	1/4	100

**INTERNAL / EXTERNAL LOCKS**



**EXTERNAL LOCKS**

Part#	SIZE	QTY
121-451	#6	100
121-452	#8	100
121-453	#10	100
121-454	#12	100
121-455	#14	100
121-456	5/16	100
121-457	3/8	50
121-458	7/16	50
121-459	1/2	50
121-460	9/16	25
121-461	5/8	25
121-462	3/4	25

**INTERNAL LOCKS**

Part#	SIZE	QTY
121-571	#6	100
121-572	#8	100
121-573	#10	100
121-574	#12	100
121-575	#14	100
121-576	5/16	100
121-577	3/8	50
121-578	7/16	50
121-579	1/2	50
121-580	9/16	25
121-581	5/8	25
121-582	3/4	25

**COUNTER SUNK FLAT WASHERS**



**EXT COUNTER SUNK**

Part#	SIZE	QTY
121-619	#6	100
121-620	#8	100
121-622	#10	100
121-624	#14	100

**FLUSH FLAT WASHERS**

Part #	SIZE	QTY
121-689	#6	100
121-690	#8	100
121-691	#10	100



**COUNTER FLAT WASHERS**

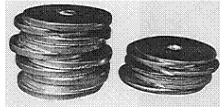
Part #	SIZE	QTY
121-673	#8	100
121-674	#10	100
121-675	#12	100



### FENDER WASHERS

#### FENDER WASHERS

Part #	SIZE	QTY
121-804	3/16 X 3/4	100
121-806	3/16 X 1	100
121-808	1/4 X 1	100
121-810	1/4 X 1-1/4	100
121-812	1/4 X 1-1/2	50
121-814	1/4 X 2	50
121-818	5/16 X 1-1/4	50
121-820	5/16 X 1-1/2	50
121-822	5/16 X 2	50
121-823	3/8 X 1-1/4	50
121-824	3/8 X 1-1/2	50
121-826	3/8 X 2	50
121-828	1/2 X 1-1/2	25
121-829	1/2 X 1-3/4	25
121-830	1/2 X 2	25



#### H/D FENDER WASHERS

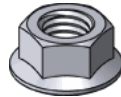
Part #	SIZE	QTY
121-848	3/16 X 1	50
121-850	3/16 X 1-1/4	50
121-853	1/4 X 1	50
121-854	1/4 X 1-1/4	25
121-855	1/4 X 1-1/2	25
121-858	5/16 X 1-1/4	25
121-859	5/16 X 1-1/2	25
121-860	3/8 X 1-1/4	25
121-862	3/8 X 1-1/2	25
121-866	1/2 X 2	25



#### RUBBER/GALV FLAT WASHERS

Part #	SIZE	QTY
121-920	1/4 x 1-1/2	25
121-928	5/16 x 3/4	25
121-936	3/8 x 1-1/8	25

### STOVER GRADE C FLANGE NUTS



#### USS FLANGE NUTS

Part #	SIZE	QTY
122-013	3/8-16	50
122-015	1/2-13	25
122-017	5/8-11	25
122-018	3/4-10	20

#### SAE FLANGE NUTS

Part #	SIZE	QTY
122-155	1/2-20	25
122-157	5/8-18	25
122-158	3/4-16	20
122-160	7/8-14	10

### FLANGE BOLTS



#### USS FRAME BOLTS

Part #	SIZE	QTY
122-170	3/8-16 X 1	25
122-172	3/8-16 X 1-1/4	25
122-174	3/8-16 X 1-1/2	25
122-176	3/8-16 X 1-3/4	25
122-178	3/8-16 X 2	25
122-182	3/8-16 X 2-1/2	25
122-202	1/2-13 X 1-1/4	25
122-204	1/2-13 X 1-1/2	25
122-206	1/2-13 X 1-3/4	25
122-208	1/2-13 X 2	15
122-209	1/2-13 X 2-1/4	15
122-210	1/2-13 X 2-1/2	15
122-211	1/2-13 X 2-3/4	15
122-212	1/2-13 X 3	15
122-213	1/2-13 X 3-1/4	15
122-214	1/2-13 X 3-1/2	15
122-222	1/2-13 X 4-1/2	15
122-250	5/8-11 X 1-1/2	10
122-252	5/8-11 X 1-3/4	10
122-254	5/8-11 X 2	10
122-256	5/8-11 X 2-1/4	10
122-260	5/8-11 X 2-1/2	10
122-264	5/8-11 X 3	10
122-266	5/8-11 X 3-1/4	10
122-267	5/8-11 X 3-1/2	10
122-268	5/8-11 X 3-3/4	10
122-269	5/8-11 X 4	10
122-272	5/8-11 X 4-1/2	10
122-280	5/8-11 X 5	10
122-282	5/8-11 X 5-1/2	10
122-314	3/4-10 X 1-1/2	10
122-315	3/4-10 X 1-3/4	10
122-316	3/4-10 X 2	10
122-318	3/4-10 X 2-1/4	10
122-320	3/4-10 X 2-1/2	10
122-322	3/4-10 X 2-3/4	10
122-324	3/4-10 X 3	10
122-325	3/4-10 X 3-1/4	10
122-326	3/4-10 X 3-1/2	10
122-330	3/4-10 X 4	10

#### SAE FRAME BOLTS

Part #	SIZE	QTY
122-552	1/2-20 X 1-1/2	25
122-554	1/2-20 X 1-3/4	25
122-556	1/2-20 X 2	15
122-558	1/2-20 X 2-1/2	15
122-492	5/8-18 X 1-1/2	10
122-493	5/8-18 X 1-3/4	10
122-494	5/8-18 X 2	10
122-495	5/8-18 X 2-1/4	10
122-496	5/8-18 X 2-1/2	10
122-497	5/8-18 X 2-3/4	10
122-498	5/8-18 X 3	10
122-500	5/8-18 X 3-1/2	10
122-502	5/8-18 X 4	10
122-504	5/8-18 X 4-1/2	10
122-508	5/8-18 X 5	10
122-555	3/4-16 X 1-3/4	10
122-556	3/4-16 X 2	10
122-557	3/4-16 X 2-1/4	10
122-560	3/4-16 X 2-1/2	10
122-561	3/4-16 X 2-3/4	10
122-564	3/4-16 X 3	10

**FLANGE BOLTS**



**SERRATED GRADE 5 BOLTS**

Part #	SIZE	QTY
123-204	1/4-20 X 1/2	50
123-205	1/4-20 X 5/8	50
123-206	1/4-20 X 3/4	50
123-208	1/4-20 X 1	50
123-210	1/4-20 X 1-1/4	25
<b>123-212</b>	1/4-20 X 1-1/2	25
123-225	5/16-18 X 3/4	25
123-228	5/16-18 X 1	25
123-230	5/16-18 X 1-1/4	25
123-232	5/16-18 X 1-1/2	25
123-236	5/16-18 X 2	25
123-248	3/8-16 X 3/4	25
123-250	3/8-16 X 1	25
123-252	5/16-18 X 1-1/4	25
123-254	3/8-16 X 1-1/2	25
123-258	3/8-16 X 2	25

**ELEVATOR BOLTS ZINC**



**ELEVATOR BOLTS**

Part #	SIZE	QTY
123-500	1/4-20 X 3/4	100
123-501	1/4-20 X 1	100
123-502	1/4-20 X 1-1/4	100
123-504	1/4-20 X 1-1/2	100
123-505	1/4-20 X 1-3/4	100
123-506	1/4-20 X 2	100
123-508	1/4-20 X 2-1/2	50
123-510	1/4-20 X 3	50
123-514	1/4-20 X 4	50
123-522	5/16 X 3/4	50
123-523	5/16-18 X 1	50
123-524	5/16 X 1-1/4	50
123-525	5/16-18 X 1-1/2	50
123-526	5/16-18 X 2	50
123-529	5/16-18 X 2-1/2	50
123-531	5/16-18 X 3	50
123-554	3/8-16 X 1-1/4	50
123-555	3/8-16 X 1-1/2	50
123-557	3/8-16 X 2	50
123-559	3/8-16 X 2-1/2	50
123-561	3/8-16 X 3	50

**TAP BOLTS**



**FULLY THREADED TAP BOLTS GRADE 5**

Part #	SIZE	QTY
123-660	1/4-20 X 2	50
123-690	5/16-18 X 2	50
123-698	5-16 X 3	25
123-720	3/8-16 X 2	50
123-722	3/8-16 X 2-1/2	50
123-725	3/8-16 X 3	50

**GD-2 3' ALL THREAD**



**USS ALL 3' THREAD**

Part #	SIZE	QTY
124-160	10-24	EA
124-166	1/4-20	EA
124-167	5/16-18	EA
124-168	3/8-16	EA
124-169	7/16-14	EA
124-170	1/2-13	EA
124-171	9/16-12	EA
124-172	5/8-11	EA
124-173	3/4-10	EA
124-174	7/8-9	EA
124-175	1-8	EA

**SAE ALL 3' THREAD**

Part #	SIZE	QTY
124-161	10-32	EA
124-182	1/4-28	EA
124-183	5/16-24	EA
124-184	3/8-24	EA
124-185	7/16-20	EA
124-186	1/2-20	EA
124-187	9/16-18	EA
124-188	5/8-18	EA
124-189	3/4-16	EA
124-190	7/8-14	EA
124-191	1-14	EA

**B-7 3' ALL THREAD**



**USS ALL 3' THREAD**

Part #	SIZE	QTY
124-847	1/4-20	EA
124-848	5/16-18	EA
124-849	3/8-16	EA
124-850	7/16-14	EA
124-851	1/2-13	EA
124-852	9/16-12	EA
124-853	5/8-11	EA
124-854	3/4-10	EA
124-855	7/8-9	EA
124-856	1-8	EA
124-858	1-1/8-7	EA
124-862	1-1/4-7	EA

**SAE ALL 3' THREAD**

Part #	SIZE	QTY
124-872	1/4-28	EA
124-873	5/16-24	EA
124-874	3/8-24	EA
124-875	7/16-20	EA
124-876	1/2-20	EA
124-878	5/8-18	EA
124-879	3/4-16	EA
124-880	7/8-14	EA
124-881	1-14	EA

Metric threaded rods product grade A

Specifications and International Standards: DIN 975 : 1986

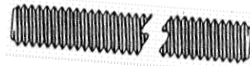
Specifications and International Standards:

(B976)

Mechanical Properties - international standards: ISO 3506

Mechanical Properties - property class:

Grade 8.8 steel Mechanical Properties - property class:



**METRIC ALL THREAD**

Part #	SIZE	QTY
124-890	5 X .80	EA
124-892	6 X 1.00	EA
124-894	8 X 1.25	EA
124-900	10 X 1.50	EA
124-906	12 X 1.75	EA
124-912	14 X 2.00	EA
124-918	16 X 2.00	EA
124-924	18 X 2.50	EA
124-925	20 X 2.50	EA
124-926	22 X 2.50	EA
124-927	24 X 3.00	EA

**B-7 6' ALL THREAD**



**USS ALL 6' THREAD**

Part #	SIZE	QTY
124-073	1/4-20	EA
124-074	5/16-18	EA
124-075	3/8-16	EA
124-076	7/16-14	EA
124-077	1/2-13	EA
124-078	9/16-12	EA
124-079	5/8-11	EA
124-080	3/4-10	EA

**SAE ALL 6' THREAD**

Part #	SIZE	QTY
124-087	1/4-28	EA
124-088	5/16-24	EA
124-089	3/8-24	EA
124-090	7/16-20	EA
124-091	1/2-20	EA
124-092	9/16-18	EA
124-093	5/8-18	EA
124-094	3/4-16	EA
124-095	7/8-14	EA
124-096	1-14	EA

**NOTE: Can not ship 6 ft rod**



### STAINLESS NUTS



#### STAINLESS NUTS

Part #	SIZE	QTY
125-002	6-32	100
125-003	8-32	100
125-004	10-24	100
125-005	10-32	100
125-006	1/4-20	50
125-007	5/16-18	50
125-008	3/8-16	50
125-009	7/16-14	25
125-010	1/2-13	25
125-012	5/8-11	25
125-013	3/4-10	25

Part #	SIZE	QTY
125-014	1/4-28	50
125-015	5/16-24	50
125-016	3/8-24	50

#### STAINLESS NYLON NUTS

Part #	SIZE	QTY
125-017	6-32	100
125-018	8-32	100
125-019	10-24	100
125-020	10-32	100
125-021	1/4-20	50
125-022	5/16-18	50
125-023	3/8-16	50
125-024	7/16-14	25
125-025	1/2-13	25
125-027	5/8-11	25

Part #	SIZE	QTY
125-026	1/4-28	50
125-028	5/16-24	50

### STAINLESS ACORN NUTS

Part #	SIZE	QTY
125-030	1/4-20	25
125-031	5/16-18	25
125-032	3/8-16	25



### STAINLESS FLATS / LOCKS



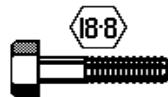
#### STAINLESS FLATS

Part #	SIZE	QTY
125-034	6	100
125-035	8	100
125-036	10	100
125-040	1/4 X 5/8	100
125-042	5/16 X 3/4	100
125-043	5/16 X 7/8	100
125-045	3/8 X 7/8	100
125-046	3/8 X 1	100
125-047	7/16 X 15/16	50
125-048	7/16 X 1-1/8	50
125-050	1/2 X 1-1/4	50
125-051	5/8 X 1-1/4	25
125-052	5/8 X 1-1/2	25
125-054	3/4 X 1-3/4	25
125-055	3/4 X 1-7/8	25

#### STAINLESS LOCKS

Part #	SIZE	QTY
125-056	6	200
125-057	8	200
125-058	10	200
125-060	1/4	100
125-061	5/16	100
125-062	3/8	50
125-063	7/16	50
125-064	1/2	50
125-066	5/8	25

**STAINLESS BOLTS**



**1/4-20 DIAMETER**

Part #	LGTH	QTY
125-071	1/2	50
125-072	5/8	50
125-073	3/4	50
125-074	1	50
125-075	1-1/4	50
125-076	1-1/2	50
125-077	1-3/4	25
125-078	2	25
125-080	2-1/2	25
125-081	2-3/4	25
125-082	3	25
125-084	3-1/2	25
125-086	4	25
125-090	6	

**3/8-16 DIAMETER**

Part #	LGTH	QTY
125-113	1/2	50
125-115	3/4	50
125-116	1	50
125-117	1-1/4	50
125-118	1-1/2	50
125-119	1-3/4	25
125-120	2	25
125-122	2-1/2	25
125-123	2-3/4	25
125-124	3	25
125-126	3-1/2	25
125-128	4	25

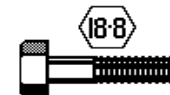
**5/16-18 DIAMETER**

Part #	LGTH	QTY
125-094	1/2	50
125-096	3/4	50
125-097	1	50
125-098	1-1/4	50
125-099	1-1/2	50
125-100	1-3/4	25
125-101	2	25
125-103	2-1/2	25
125-104	2-3/4	25
125-105	3	25
125-107	3-1/2	25
125-109	4	25

**7/16-14 DIAMETER**

Part #	LGTH	QTY
125-130	3/4	25
125-131	1	25
125-132	1-1/4	25
125-133	1-1/2	25
125-135	2	25
125-138	2-3/4	25
125-139	3	25

**STAINLESS BOLTS**



**1/2-13 DIAMETER**

Part #	LGTH	QTY
125-140	1/2	25
125-142	3/4	25
125-144	1	25
125-145	1-1/4	25
125-146	1-1/2	25
125-147	1-3/4	25
125-148	2	25
125-150	2-1/2	25
125-151	2-3/4	25
125-152	3	25
125-154	3-1/2	25
125-156	4	25

**3/4-10 DIAMETER**

Part #	LGTH	QTY
125-208	2	10
125-210	2-1/2	10
125-214	3	10
125-218	3-1/2	10
125-220	4	10

**5/8-11 DIAMETER**

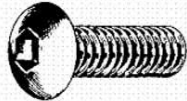
Part #	LGTH	QTY
125-178	1-1/2	10
125-180	2	10
125-182	2-1/2	10
125-184	3	10
125-186	3-1/2	10
125-188	4	10

**STAINLESS CARRIAGE BOLTS**



Part #	LGTH	QTY
125-323	1/4-20 X 1/2	25
125-324	1/4-20 X 5/8	25
125-325	1/4-20 X 3/4	25
125-327	1/4-20 X 1	25
125-340	1/4-20 X 4	25
125-346	5/16-18 X 3/4	25
125-348	5/16-18 X 1	25
125-360	5/16-18 X 1-1/4	25
125-362	5/16-18 X 1-1/2	25
125-364	5/16-18 X 2	25
125-366	5/16-18 X 2-1/2	25
125-368	5/16-18 X 3	25

**STAINLESS BUTTON SOCKET HEADS BOLTS**



**STAINLESS METRIC SOCKET HEAD BOLTS**

Part #	SIZE	QTY
125-738	6 X 1.00 X 20	50
125-744	6 X 1.00 X 35	50
125-747	8 X 1.25 X 20	50
125-748	8 X 1.25 X 25	50
125-749	8 X 1.25 X 30	50
125-750	8 X 1.25 X 35	50
125-760	10 X 1.50 X 20	50
125-763	10 X 1.50 X 35	50
125-765	10 X 1.50 X 45	50
125-766	10 X 1.50 X 50	50
125-768	12 X 1.75 X 20	50
125-770	12 X 1.75 X 35	50



**STAINLESS SOCKET HEAD BOLTS**



Part #	SIZE	QTY
125-480	10-24 X 1/2	50
125-482	10-24 X 3/4	50
125-484	10-24 X 1	50
125-502	1/4-20 X 1/2	25
125-506	1/4-20 X 3/4	25
125-508	1/4-20 X 1	25
125-509	1/4-20 X 1-1/4	25
125-510	1/4-20 X 1-1/2	25
125-528	5/16-18 X 3/4	25
125-529	5/16-18 X 7/8	25
125-530	5/16-18 X 1	25
125-531	5/16-18 X 1-1/4	25
125-532	5/16-18 X 1-1/2	25
125-533	5/16-18 X 1-3/4	25
125-534	5/16-18 X 2	25
125-562	3/8-16 X 5/8	25
125-563	3/8-16 X 3/4	25
125-565	3/8-16 X 1	25
125-566	3/8-16 X 1-1/4	25
125-567	3/8-16 X 1-1/2	25
125-568	3/8-16 X 1-3/4	25
125-570	3/8-16 X 2	25
125-571	3/8-16 X 2-1/4	25
125-572	3/8-16 X 2-1/2	25

125-576	7/16-14 X 1	25
	7/16-14 X 1-1/4	25
	7/16-14 X 1-1/2	25
	7/16-14 X 1-3/4	25
125-585	7/16-14 X 2	25
	1/2-13 X 3/4	25
	1/2-13 X 1	25
	1/2-13 X 1-1/4	25
125-587	1/2-13 X 1-1/2	25
	1/2-13 X 1-1/2	25
	1/2-13 X 1-3/4	25
	1/2-13 X 2	25
125-590	5/8-11 X 2	10
	5/8-11 X 2-1/4	10
	5/8-11 X 2-1/2	10
	5/8-11 X 3	10
125-612	5/8-11 X 3-1/2	10
	5/8-11 X 4	10
	5/8-11 X 4-1/2	10
	5/8-11 X 5	10
125-622	5/8-11 X 5-1/2	10

**STAINLESS FLAT SOCKET HEAD BOLTS**



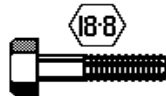
Part #	SIZE	QTY
125-672	1/4-20 X 3/4	25
125-673	1/4-20 X 1	25
125-674	1/4-20 X 1-1/4	25
125-675	1/4-20 X 1-1/2	25
125-682	5/16-18 X 1/2	25
125-686	5/16-18 X 1	25
125-687	5/16-18 X 1-1/4	25
125-688	5/16-18 X 1-1/2	25
125-700	3/8-16 X 3/4	25
125-704	3/8-16 X 1	25
125-705	3/8-16 X 1-1/4	25
125-706	3/8-16 X 1-1/2	25

**STAINLESS FULL THREAD TAP BOLTS**



Part #	LGTH	QTY
125-810	3/8-16 X 2-1/2	25
125-845	1/2-13 X 2-1/2	25

**STAINLESS METRIC HEX HEAD BOLTS**



Part #	SIZE	QTY
125-925	6 X 1.00 X 25	50
125-948	10 X 1.50 X 20	25
125-950	10 X 1.50 X 25	25
125-953	10 X 1.50 X 40	25
125-957	10 X 1.50 X 60	25

**STAINLESS FENDER WASHERS**



**STAINLESS FENDER**

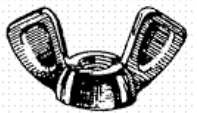
Part #	SIZE	MATERIAL	QTY
126-010	3/16 x 1	.040	50
126-011	3/16 x 1-1/4		50
126-014	1/4 X 1	.050	50
126-015	1/4 X 1-1/4	.050	50
126-016	1/4 X 1-1/2	.062	50
126-017	1/4 X 2	.062	25
126-019	5/16 X 1	.050	50
126-020	5/16 X 1-1/4	.050	50
126-025	5/16 X 1-1/2	.062	50
126-026	5/16 X 2	.062	25
126-030	3/8 X 1-1/2	.062	50
126-032	3/8 X 2	.062	25
126-033	1/2 X 1-1/2	.062	25
126-035	1/2 X 2	.062	25

**STAINLESS SETTATED NUTS**



Part #	SIZE	QTY
126-235	1/2-13	25

**WING NUTS**



Part #	SIZE	QTY
126-322	10-24	25
126-324	1/4-20	25
126-326	5/16-18	25
126-328	3/8-16	25

**STAINLESS STEEL PHIL PAN MACHINE SCREWS**



**6-32 DIAMETER**

Part #	SIZE	QTY
126-945	6-32 X 1/2	50
126-947	6-32 X 3/4	50
126-949	6-32 X 1	50
126-950	6-32 X 1-1/4	50
126-951	6-32 X 1-1/2	50

**8-32 DIAMETER**

Part #	SIZE	QTY
126-957	8-32 X 1/4	50
126-958	8-32 X 3/8	50
126-960	8-32 X 1/2	50
126-962	8-32 X 3/4	50
126-964	8-32 X 1	50
126-965	8-32 X 1-1/4	50
126-966	8-32 X 1-1/2	50

**STAINLESS STEEL PHIL OVAL MACHINE SCREWS**



**6-32 DIAMETER**

Part #	SIZE	QTY
127-210	6-32 X 1/2	50
127-212	6-32 X 3/4	50
127-214	6-32 X 1	50
127-216	6-32 X 1-1/4	50

**8-32 DIAMETER**

Part #	SIZE	QTY
127-220	8-32 X 1/4	50
127-222	8-32 X 1/2	50
127-224	8-32 X 3/4	50
127-226	8-32 X 1	50
127-228	8-32 X 1-1/4	25

**10-24 DIAMETER**

Part #	SIZE	QTY
126-976	10-24 X 1/2	50
126-978	10-24 X 3/4	50
126-980	10-24 X 1	50
126-981	10-24 X 1-1/4	25
126-982	10-24 X 1-1/2	25
126-984	10-24 X 2	25

**10-32 DIAMETER**

Part #	SIZE	QTY
127-101	10-32 X 1/2	50
127-103	10-32 X 3/4	50
127-105	10-32 X 1	50
127-106	10-32 X 1-1/4	25
127-107	10-32 X 1-1/2	25

**10-24 DIAMETER**

Part #	SIZE	QTY
127-240	10-24 X 1/2	50
127-242	10-24 X 3/4	50
127-244	10-24 X 1	50
127-246	10-24 X 1-1/4	25
127-248	10-24 X 1-1/2	25

**10-32 DIAMETER**

Part #	SIZE	QTY
127-260	10-32 X 1/2	50
127-262	10-32 X 3/4	50
127-264	10-32 X 1	50
127-266	10-32 X 1-1/4	25
127-268	10-32 X 1-1/2	25

**1/4-20 DIAMETER**

Part #	SIZE	QTY
127-148	1/4-20 X 1/2	25
127-150	1/4-20 X 3/4	25
127-152	1/4-20 X 1	25
127-153	1/4-20 X 1-1/4	25
127-154	1/4-20 X 1-1/2	25
127-158	1/4-20 X 2	25

**STAINLESS STEEL PHIL FLAT MACHINE SCREWS****6-32 DIAMETER**

Part #	SIZE	QTY
127-277	6-32 X 3/4	50
127-278	6-32 X 1	50
127-279	6-32 X 1-1/4	50
127-280	6-32 X 1-1/2	50
127-282	6-32 X 2	50

**8-32 DIAMETER**

Part #	SIZE	QTY
127-284	8-32 X 1/2	50
127-285	8-32 X 3/4	50
127-286	8-32 X 1	50
127-287	8-32 X 1-1/4	50
127-288	8-32 X 1-1/2	50
127-290	8-32 X 2	50

**10-24 DIAMETER**

Part #	SIZE	QTY
127-292	10-24 X 1/2	50
127-293	10-24 X 3/4	50
127-294	10-24 X 1	50
127-295	10-24 X 1-1/4	50
127-296	10-24 X 1-1/2	50
127-298	10-24 X 2	50

**10-32 DIAMETER**

Part #	SIZE	QTY
127-302	10-32 X 1/2	50
127-303	10-32 X 3/4	50
127-304	10-32 X 1	50
127-305	10-32 X 1-1/4	25
127-306	10-32 X 1-1/2	25

**1/2-24 DIAMETER**

Part #	SIZE	QTY
127-380	12-24 X 1/2	50
127-382	12-24 X 3/4	50
127-384	12-24 X 1	50
127-386	12-24 X 1-1/4	50
127-388	12-24 X 1-1/2	50
127-390	12-24 X 2	25

**1/4-20 DIAMETER**

Part #	SIZE	QTY
127-310	1/4-20 X 1/2	50
127-348	1/4-20 X 3/4	50
127-350	1/4-20 X 1	25
127-352	1/4-20 X 1-1/4	25
127-354	1/4-20 X 1-1/2	25
127-356	1/4-20 X 2	25
127-358	1/4-20 X 2-1/2	25
127-360	1/4-20 X 3	25
127-362	1/4-20 X 3-1/2	25

**5/16-18 DIAMETER**

Part #	SIZE	QTY
127-366	5/16-18 X 3/4	25
127-368	5/16-18 X 1	25
127-370	5/16-18 X 1-1/2	25
127-372	5/16-18 X 2	25
127-374	5/16-18 X 2-1/2	25
127-376	5/16-18 X 3	25

**STAINLESS STEEL PHIL PAN HEAD SHEET METAL****#6 DIAMETER**

Part #	SIZE	QTY
127-632	6 X 3/8	50
127-633	6 X 1/2	50
127-635	6 X 3/4	50
127-637	6 X 1	50

**#12 DIAMETER**

Part #	SIZE	QTY
127-685	12 X 1/2	50
127-688	12 X 3/4	50
127-689	12 X 1	50
127-690	12 X 1-1/4	25
127-691	12 X 1-1/2	25
127-693	12 X 2	25

**#8 DIAMETER**

Part #	SIZE	QTY
127-645	8 X 3/8	50
127-647	8 X 1/2	50
127-648	8 X 3/4	50
127-649	8 X 1	50
127-650	8 X 1-1/4	50

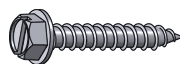
**#14 DIAMETER**

Part #	SIZE	QTY
127-714	14 X 1/2	25
127-718	14 X 3/4	25
127-719	14 X 1	25
127-720	14 X 1-1/4	25
127-721	14 X 1-1/2	25
127-722	14 X 1-3/4	25
127-723	14 X 2	25

**#10 DIAMETER**

Part #	SIZE	QTY
127-667	10 X 1/2	50
127-668	10 X 3/4	50
127-669	10 X 1	50
127-670	10 X 1-1/4	25
127-671	10 X 1-1/2	25
127-673	10 X 2	25

**STAINLESS STEEL HEX HEAD SHEET METAL**



**#8 DIAMETER**

Part #	SIZE	QTY
127-733	8 X 1/2	50
127-734	8 X 3/4	50
127-735	8 X 1	50

**#12 DIAMETER**

Part #	SIZE	QTY
127-748	12 X 3/4	50
127-749	12 X 1	50
127-751	12 X 1-1/2	25
127-754	12 X 2	25

**#10 DIAMETER**

Part #	SIZE	QTY
127-739	10 X 1/2	50
127-740	10 X 3/4	50
127-742	10 X 1	50
127-744	10 X 1-1/2	50

**#14 DIAMETER**

Part #	SIZE	QTY
127-762	14 X 3/4	25
127-763	14 X 1	25
127-765	14 X 1-1/2	25
127-767	14 X 2	25

**STAINLESS STEEL FLAT HEAD SHEET METAL**



**#6 DIAMETER**

Part #	SIZE	QTY
127-840	6 X 1/2	50
127-842	6 X 3/4	50
127-844	6 X 1	50
127-845	6 X 1-1/4	50

**#10 DIAMETER**

Part #	SIZE	QTY
127-860	10 X 1/2	50
127-862	10 X 3/4	50
127-864	10 X 1	50
127-865	10 X 1-1/4	50
127-866	10 X 1-1/2	25
127-868	10 X 2	25

**#8 DIAMETER**

Part #	SIZE	QTY
127-850	8 X 1/2	50
127-852	8 X 3/4	50
127-854	8 X 1	50
127-855	8 X 1-1/4	50
127-856	8 X 1-1/2	50
127-858	8 X 2	50

**#12 DIAMETER**

Part #	SIZE	QTY
127-872	12 X 1/2	25
127-874	12 X 3/4	25
127-876	12 X 1	25
127-877	12 X 1-1/4	25
127-878	12 X 1-1/2	25
127-880	12 X 2	25

**#14 DIAMETER**

Part #	SIZE	QTY
127-882	14 X 3/4	25
127-888	14 X 1	25
127-892	14 X 1-1/2	25
127-894	14 X 2	25
127-898	14 X 3	25

**STAINLESS STEEL PHIL OVAL HEAD SHEET METAL**



**#6 DIAMETER**

Part #	SIZE	QTY
127-775	6 X 1/2	50
127-777	6 X 3/4	50
127-779	6 X 1	50
127-781	6 X 1-1/4	50

**#10 DIAMETER**

Part #	SIZE	QTY
127-806	10 X 1/2	50
127-808	10 X 3/4	50
127-810	10 X 1	50
127-812	10 X 1-1/4	50
127-814	10 X 1-1/2	25

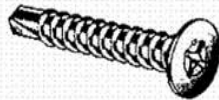
**#8 DIAMETER**

Part #	SIZE	QTY
127-790	8 X 1/2	50
127-792	8 X 3/4	50
127-794	8 X 1	50
127-796	8 X 1-1/4	50
127-798	8 X 1-1/2	50

**#12 DIAMETER**

Part #	SIZE	QTY
127-820	12 X 3/4	25
127-822	12 X 1	25
127-824	12 X 1-1/4	25
127-826	12 X 1-1/2	25

**STAINLESS STEEL FLAT HEAD TEKS SHEET METAL**



**#8 DIAMETER**

Part #	SIZE	QTY
127-926	8 X 3/4	50
127-928	8 X 1	50
127-930	8 X 1-1/4	50
127-932	8 X 1-1/2	50

**#12 DIAMETER**

Part #	SIZE	QTY
127-964	12 X 3/4	50
127-966	12 X 1	50
127-968	12 X 1-1/4	25
127-970	12 X 1-1/2	25

**#10 DIAMETER**

Part #	SIZE	QTY
127-938	10 X 3/4	50
127-940	10 X 1	50
127-942	10 X 1-1/4	50
127-944	10 X 1-1/2	50

**#14 DIAMETER**

Part #	SIZE	QTY
127-982	14 X 1	25
127-984	14 X 1-1/4	25
127-986	14 X 1-1/2	25

**STAINLESS STEEL PHIL PAN HEAD TEKS SHEET METAL**



**#8 DIAMETER**

Part #	SIZE	QTY
128-930	8 X 1/2	50
128-932	8 X 3/4	50
128-934	8 X 1	50

**#12 DIAMETER**

Part #	SIZE	QTY
128-960	12 X 3/4	50
128-962	12 X 1	50

**#10 DIAMETER**

Part #	SIZE	QTY
128-940	10 X 1/2	50
128-942	10 X 3/4	50
128-944	10 X 1	50
128-948	10 X 1-1/2	50

**STAINLESS STEEL HEX TEKS SHEET METAL**



**#8 DIAMETER**

Part #	SIZE	QTY
128-847	8 X 1/2	50
128-848	8 X 3/4	50
128-849	8 X 1	50
128-851	8 X 1-1/2	50

**#12 DIAMETER**

Part #	SIZE	QTY
128-888	12 X 3/4	50
128-889	12 X 1	50
128-891	12 X 1-1/2	25
128-893	12 X 2	25

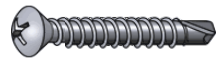
**#10 DIAMETER**

Part #	SIZE	QTY
128-867	10 X 1/2	50
128-868	10 X 3/4	50
128-869	10 X 1	50
128-870	10 X 1-1/4	50
128-871	10 X 1-1/2	50

**#14 DIAMETER**

Part #	SIZE	QTY
128-918	14 X 3/4	25
128-919	14 X 1	25
128-921	14 X 1-1/2	25
128-923	14 X 2	25

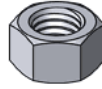
**STAINLESS STEEL OVAL HEAD TEK SHEET METAL**



**#10 DIAMETER**

Part #	SIZE	QTY
128-073	10 X 1	50
128-075	10 X 1-1/2	50
128-092	12 X 1	50
128-094	12 X 1-1/2	25

**BRASS NUTS**

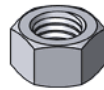


**BRASS NUTS**

Part #	SIZE	QTY
129-030	1/4-20	50
129-031	5/16-18	50
129-032	3/8-16	50
129-034	1/2-13	25
129-042	1/4-28	50
129-043	5/16-24	50
129-044	3/8-24	50
129-046	1/2-20	25

---

**GALVANIZE NUTS**



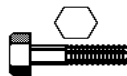
---

**GALVANIZED FLATS / LOCKS**



---

**GALVANIZED BOLTS**



## COPPER FLAT WASHERS



### STANDARD COPPER

Part #	AUV#	SIZE	ID	OD	QTY
129-425	15911	3/16	1/4	7/16	25
129-427	15914	3/16	1/4	5/8	25
129-429	15912	1/4	5/16	1/2	25
129-431	15915	1/4	5/16	11/16	25
129-433	15913	5/16	3/8	9/16	25
129-435	15916	5/16	3/8	3/4	25
129-437	15917	3/8	7/16	13/16	25
129-439	15918	7/16	1/2	7/8	25
129-441	15919	1/2	9/16	13/16	25

### METRIC COPPER

Part #	AUV#	SIZE	ID	OD	QTY
129-470	14865	6MM	6.2MM	9.8MM	25
129-474	14866	8MM	8.2MM	11.8MM	25
129-478	14867	10MM	10.2MM	15.8MM	25
129-482	14868	12MM	12.2MM	17.8MM	25
129-486	14869	14MM	14.2MM	17.8MM	25
129-490	14870	14MM	14.2MM	19.8MM	25
129-492	14871	16MM	16.2MM	19.8MM	25

### METRIC SEALING COPPER WASHERS

Part #	AUV#	SIZE	OD	MATERIAL	QTY
129-520	23911	6MM	10MM	1.0MM	25
129-524	23912	6MM	12MM	1.0MM	25
129-528	23913	8MM	12MM	1.0MM	25
129-532	23914	10MM	14MM	1.0MM	25
129-536	23915	10MM	16MM	1.0MM	25
129-540	23916	12MM	16MM	1.5MM	25
129-544	23917	12MM	18MM	1.5MM	25
129-548	23918	14MM	18MM	1.5MM	25
129-552	23919	18MM	22MM	1.5MM	25
129-556	23920	18MM	24MM	1.5MM	25
129-560	23910	20MM	24MM	1.56MM	25
129-564	23921	20MM	26MM	1.5MM	25

## ALUMINUM SEALING FLAT WASHERS



### METRIC SEALING COPPER WASHERS

Part #	AUV#	SIZE	OD	MATERIAL	QTY
129-620	23922	6MM	10MM	1.0MM	25
129-624	23923	8MM	12MM	1.0MM	25
129-628	23924	10MM	14MM	1.0MM	25
129-632	23925	12MM	16MM	1.5MM	25
129-636	23926	12MM	18MM	1.5MM	25
129-640	23927	14MM	18MM	1.5MM	25
129-644	23442	14MM	20MM	1.5MM	25
129-648	23960	14MM	22MM	1.5MM	25
129-652	24128	14MM	24MM	1.5MM	25
129-656	23928	16MM	22MM	1.5MM	25
129-660	23929	20MM	24MM	1.5MM	25
129-664	23930	20MM	26MM	1.5MM	25
129-668	23931	22MM	27MM	1.5MM	25

**METRIC NUTS GRADE 8.8 PLATED**



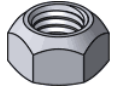
**COARSE 8.8 NUTS**

Part #	SIZE	QTY
131-004	4 X .70	100
131-005	5 X .80	100
131-006	6 X 1.00	100
131-007	7 X 1.00	50
131-008	8 X 1.25	50
131-010	10 X 1.50	50
131-012	12 X 1.75	25
131-014	14 X 2.00	12
131-016	16 X 2.00	10

**FINE 8.8 NUTS**

Part #	SIZE	QTY
131-018	8 X 1.00	50
131-020	10 X 1.00	25
131-024	10 X 1.25	25
131-026	12 X 1.25	12
131-028	12 X 1.50	12
131-032	24 X 3.00	10

**METRIC LOCK NUTS STOVER**



**COARSE STOVER 10.9 NUTS**

Part #	SIZE	QTY
131-108	6 X 1.00	50
131-110	8 X 1.25	50
131-116	10 X 1.50	25
131-122	12 X 1.75	25
131-128	14 X 2.00	10
131-134	16 X 2.00	10
131-140	18 x 2.50	10
131-144	20 x 2.50	10
131-146	22 x 2.50	10
131-148	22 X 2.50	10

**FINE STOVER 10.9 NUTS**

Part #	SIZE	QTY
131-112	8 X 1.00	50
131-118	10 X 1.25	25
131-120	10 X 1.00	25
131-124	12 X 1.50	25
131-126	12 X 1.25	25
131-130	14 X 1.50	10
131-136	16 X 1.50	10
131-142	18 X 1.50	10

**METRIC 8.8 FLATS / LOCKS**



**METRIC 8.8 FLATS**

Part #	SIZE	QTY
131-034	4	100
131-035	5	100
131-036	6	100
131-037	7	100
131-038	8	100
131-040	10	100
131-042	12	50
131-044	14	25
131-046	16	25
131-048	18	25
131-050	20	25
131-056	30	25

**METRIC 8.8 LOCKS**

Part #	SIZE	QTY
131-064	4	100
131-065	5	100
131-066	6	100
131-067	7	100
131-068	8	100
131-070	10	100
131-072	12	50
131-074	14	25
131-076	16	25
131-078	18	25
131-080	20	12
131-082	24	12
131-086	30	12

**METRIC NYLON LOCK NUTS**



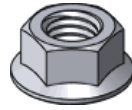
**COARSE NYLON 8.8 LOCK NUTS**

Part #	SIZE	QTY
131-150	6 X 1.00	50
131-155	7 X 1.00	50
131-160	8 X 1.25	50
131-165	10 X 1.50	25
131-180	12 X 1.75	25
131-195	14 X 2.00	10
131-210	16 X 2.00	10
131-218	18 X 1.50	10
131-225	20 X 2.50	10

**FINE NYLON 8.8 LOCK NUTS**

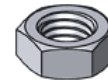
Part #	SIZE	QTY
131-163	8 X 1.00	50
131-170	10 X 1.25	25
131-175	10 X 1.00	25
131-185	12 X 1.50	25
131-190	12 X 1.25	25
131-198	14 X 1.50	20
131-212	16 X 1.50	10

**METRIC FLANGED SERRATED LOCK NUTS**



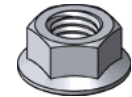
**METRIC SERRATED FLANGE NUTS**

Part #	SIZE	QTY
131-316	4 X .70	50
131-317	5 X .80	50
131-318	6 X 1.00	25
131-320	8 X 1.25	25
131-322	10 X 1.25	25
131-324	10 X 1.50	25
131-326	12 X 1.75	25
131-328	12 X 1.25	25
131-340	14 X 2.00	25
131-360	20 X 2.50	10



**METRIC JAM NUTS**

Part #	SIZE	QTY
131-420	6 X 1.00	25
131-424	8 X 1.25	25
131-428	10 X 1.50	25
131-260	20 X 2.50	10



**METRIC FLANGE NUTS**

Part #	SIZE	QTY
131360	20 X 2.50	10

**METRIC WING NUTS**

Part #	SIZE	QTY
131-090	6 X 1.00	50
131-092	8 X 1.25	50
131-094	10 X 1.50	25
131-096	12 X 1.75	25



**COARSE METRIC 8.8 BOLTS**



**4 X .70 METRIC 8.8**

Part #	LGTH	QTY
131-501	10	25
131-502	12	25
131-503	16	25
131-505	20	25
131-506	25	25
131-507	30	25
131-508	35	25
131-509	40	25

**7 X 1.00 METRIC 8.8**

Part #	LGTH	QTY
131-716	16	25
131-720	20	25
131-725	25	25
131-730	30	25
131-735	35	25
131-740	40	25

**5 X .80 METRIC 8.8**

Part #	LGTH	QTY
131-510	10	25
131-512	12	25
131-516	16	25
131-520	20	25
131-525	25	25
131-530	30	25
131-535	35	25
131-540	40	25
131-544	60	25
131-546	70	25

**8 X 1.25 METRIC 8.8**

Part #	LGTH	QTY
131-812	12	25
131-816	16	25
131-820	20	25
131-825	25	25
131-830	30	25
131-835	35	25
131-840	40	25
131-850	50	12
131-860	60	12
131-870	70	12
131-875	75	12
131-880	80	12
131-885	90	12
131-890	100	12

**6 X 1.00 METRIC 8.8**

Part #	LGTH	QTY
131-610	10	25
131-612	12	25
131-616	16	25
131-620	20	25
131-625	25	25
131-630	30	25
131-635	35	25
131-640	40	25
131-644	50	25
131-646	60	25
131-658	120	25

**COARSE METRIC 8.8 BOLTS**



**10 X 1.50 METRIC 8.8**

Part #	LGTH	QTY
132-010	10	25
132-016	16	25
132-020	20	25
132-025	25	25
132-030	30	25
132-031	35	25
132-040	40	12
132-045	45	12
132-050	50	12
132-051	55	12
132-060	60	12
132-070	70	12
132-080	80	12
132-085	90	12
132-090	100	12

**12 X 1.75 METRIC 8.8**

Part #	LGTH	QTY
132-226	20	25
132-228	25	25
132-230	30	25
132-235	35	25
132-240	40	12
132-245	45	12
132-250	50	12
132-260	60	12
132-270	70	12
132-275	75	12
132-280	80	12
132-285	90	12
132-290	100	12
132-299	220	12

**FINE METRIC 8.8 BOLTS**



**8 X 1.00 METRIC 8.8**

Part #	LGTH	QTY
132-320	10	25
132-322	20	25
132-324	25	25
132-326	30	25
132-328	40	25

**10 X 1.00 METRIC 8.8**

Part #	LGTH	QTY
132-630	20	12
132-632	30	12
132-634	40	12
132-636	50	12

**10 X 1.25 METRIC 8.8**

Part #	LGTH	QTY
132-638	25	12
132-640	30	12
132-642	35	12
132-644	40	12
132-646	50	12
132-649	60	12
132-655	80	12

**12 X 1.50 METRIC 8.8**

Part #	LGTH	QTY
132-810	20	12
132-820	30	12
132-821	35	12
132-823	40	12
132-830	50	12

**12 X 1.25 METRIC 8.8**

Part #	LGTH	QTY
132-944	30	12
132-952	50	12

**16 X 2.00 METRIC 8.8**

Part #	LGTH	QTY
133-200	20	12

**JIS SMALL HEAD METRIC 8.8 BOLTS**



**J.I.S. SMALL PATTERN NUTS**

Part #	LGTH	WRENCH	QTY
134-060	8 X 1.25	12 MM HEX	25
134-066	8 X 1.25	14 MM HEX	25
134-074	8 X 1.25	17 MM HEX	25

**J.I.S. SMALL HEAD 8.8 HEX BOLTS**

Part #	SIZE	LENGTH	WRENCH	QTY
134-100	8 X 1.25	16	12 MM HEX	25
134-102	8 X 1.25	20	12 MM HEX	25
134-104	8 X 1.25	25	12 MM HEX	25
134-106	8 X 1.25	30	12 MM HEX	25
134-108	8 X 1.25	35	12 MM HEX	25
134-110	8 X 1.25	40	12 MM HEX	25
134-112	8 X 1.25	50	12 MM HEX	25
134-130	10 X 1.25	20	14 MM HEX	25
134-132	10 X 1.25	25	14 MM HEX	25
134-134	10 X 1.25	30	14 MM HEX	25
134-136	10 X 1.25	35	14 MM HEX	15
134-138	10 X 1.25	40	14 MM HEX	15
134-140	10 X 1.25	45	14 MM HEX	15
134-142	10 X 1.25	50	14 MM HEX	15
134-144	10 X 1.25	60	14 MM HEX	10
134-146	10 X 1.25	70	14 MM HEX	10
134-172	12 X 1.25	20	17 MM HEX	10
134-174	12 X 1.25	25	17 MM HEX	10
134-176	12 X 1.25	30	17 MM HEX	10
134-178	12 X 1.25	35	17 MM HEX	10
134-180	12 X 1.25	40	17 MM HEX	10
134-182	12 X 1.25	50	17 MM HEX	10



**METRIC GRADE 10.9 PLATED**



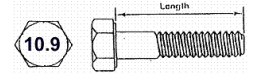
**COARSE 10.9 NUTS**

Part #	SIZE	QTY
135-006	6 X 1.00	100
135-008	8 X 1.25	50
135-010	10 X 1.50	50
135-012	12 X 1.75	25
135-014	14 X 2.00	12
135-016	16 X 2.00	12
135-018	18 X 2.50	12
135-020	20 X 2.50	12
135-022	24 X 3.00	12
135-026	30 X 3.50	5
135-027	8 X 1.00	25
135-028	10 X 1.00	25
135-029	10 X 1.25	25
135-030	12 X 1.50	25
135-032	14 X 1.50	25
135-033	16 X 1.50	20
135-034	22 X 1.50	5

**METRIC 10.9 FLATS**

Part #	SIZE	QTY
135-036	6	100
135-038	8	100
135-040	10	50
135-042	12	25
135-044	14	25
135-046	16	12
135-048	18	12
135-050	20	12
135-054	24	12
135-058	30	12
135-064	36	12

**METRIC 10.9 BOLTS**



**10 X 1.50 METRIC 10.9**

Part #	LGTH	QTY
135-744	16	25
135-746	20	25
135-748	25	25
135-750	30	25
135-752	35	25
135-754	40	12
135-756	45	12
135-758	50	12
135-759	55	12
135-763	60	12
135-764	65	12
135-765	70	12
135-766	80	12
135-767	90	12
135-768	100	12
135-769	110	12
135-770	120	12
135-771	130	12
135-772	140	12
135-773	150	12

**12 X 1.75 METRIC 10.9**

Part #	LGTH	QTY
135-775	20	25
135-776	25	25
135-777	30	25
135-778	35	12
135-780	40	12
135-782	45	12
135-784	50	12
135-785	55	12
135-786	60	12
135-788	65	12
135-790	70	12
135-794	80	12
135-798	90	12
135-800	100	12
135-801	110	12
135-802	120	12
135-803	130	12
135-804	140	12
135-805	150	12
135-810	190	12

**6 X 1.00 METRIC 10.9**

Part #	LGTH	QTY
135-642	12	25
135-646	16	25
135-647	18	25
135-648	20	25
135-650	25	25
135-652	30	25
135-654	35	25
135-656	40	25
135-658	45	25
135-660	50	25
135-661	55	25
135-662	60	12
135-664	70	12
135-666	80	12
135-668	90	12
135-670	100	12
135-672	110	12
135-674	120	12

**8 X 1.25 METRIC 10.9**

Part #	LGTH	QTY
135-712	12	25
135-714	16	25
135-716	20	25
135-718	25	25
135-720	30	25
135-722	35	25
135-724	40	25
135-726	45	25
135-728	50	12
135-732	60	12
135-734	70	12
135-736	80	12
135-737	90	12
135-738	100	12
135-739	110	12
135-740	120	12
135-741	130	12
135-742	140	12
135-743	150	12

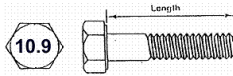
**14 X 2.00 METRIC 8.8**

Part #	LGTH	QTY
135-813	25	10
135-814	30	10
135-816	35	10
135-818	40	10
135-822	50	10
135-826	60	10
135-830	70	10
135-832	80	10
135-834	90	10
135-836	100	10
135-838	110	10
135-840	120	10
135-842	130	10
135-844	140	10
135-846	150	10

**16 X 2.00 METRIC 10.9**

Part #	LGTH	QTY
135-852	20	10
135-854	30	10
135-858	40	10
135-860	45	10
135-862	50	10
135-864	55	10
135-866	60	10
135-868	65	10
135-870	70	10
135-872	75	10
135-874	80	10
135-878	90	10
135-882	100	10
135-884	110	10
135-886	120	10
135-888	130	10
135-890	140	10
135-892	150	10
135-894	160	10
135-898	180	10

**METRIC 10.9 BOLTS**



**18 X 2.50 METRIC 10.9**

Part #	LGTH	QTY
135-944	30	10
135-946	40	10
135-948	50	10
135-950	60	10
135-952	70	10
135-953	80	10
135-954	100	10
135-955	120	10
135-956	160	10
135-957	180	10

**20 X 2.50 METRIC 10.9**

Part #	LGTH	QTY
135-958	30	10
135-959	35	10
135-960	40	10
135-962	50	10
135-964	60	10
135-966	70	10
135-968	80	10
135-970	90	10
135-972	100	10
135-974	110	10
135-976	120	10
135-980	140	10
135-984	160	10
135-996	220	5

**24 X 3.00 METRIC 10.9**

Part #	LGTH	QTY
136-100	50	5
136-120	150	5
136-160	200	5

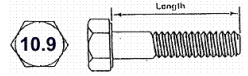
**8 X 1.00 METRIC 10.9**

Part #	LGTH	QTY
136-180	20	20
136-182	25	20
136-184	30	20
136-186	35	20
136-188	40	20
136-190	45	20
136-192	50	10
136-196	60	10

**10 X 1.25 METRIC 10.9**

136-208	20	10
136-210	25	10
136-212	30	10
136-214	35	10
136-216	40	10
136-218	45	10
136-220	50	10
136-222	55	10
136-224	60	10
136-228	70	10
136-230	80	10
136-232	90	10
136-234	100	10

**METRIC 10.9 BOLTS**



**12 X 1.50 METRIC 10.9**

136-242	20	10
136-244	25	10
136-246	30	10
136-248	35	10
136-250	40	10
136-252	45	10
136-254	50	10
136-256	55	10
136-258	60	10
136-262	70	10
136-264	80	10
136-266	90	10
136-268	100	10

**14 X 1.50 METRIC 10.9**

136-320	30	10
136-322	35	10
136-324	40	10
136-326	45	10
136-328	50	10
136-330	55	10
136-332	60	10
136-333	65	10
136-334	70	10
136-336	80	10
136-338	90	10
136-340	100	10

**16 X 1.50 METRIC 10.9**

136-360	35	10
136-362	40	10
136-364	45	10
136-366	50	10
136-368	55	10
136-370	60	10
136-372	70	10
136-374	80	10
136-376	90	10
136-378	100	10
136-398	110	10

**METRIC FLANGE BOLTS**

**5 X .80 METRIC 8.8**



Part #	LGTH	QTY
136-794	10	25
136-796	12	25
136-798	16	25
136-800	20	25

**6 X 1.00 METRIC 8.8**

Part #	LGTH	QTY
136-824	12	25
136-826	16	25
136-828	20	25
136-830	25	25
136-832	30	25
136-834	35	25
136-836	40	25
136-838	45	25

**8 X 1.25 METRIC 8.8**

Part #	LGTH	QTY
136-856	12	25
136-858	16	25
136-860	20	25
136-862	25	25
136-864	30	25
136-866	35	25
136-868	40	25
136-870	45	25
136-872	50	25
136-874	60	25
136-876	70	25

**10 X 1.25 METRIC 8.8**

Part #	LGTH	QTY
136-890	16	15
136-892	20	15
136-894	25	15
136-896	30	15
136-898	35	15
136-900	40	10
136-902	45	10
136-904	50	10
136-906	60	10
136-908	70	10
136-910	80	10
136-912	90	10
136-914	100	10

**12 X 1.75 METRIC 8.8**

Part #	LGTH	QTY
136-926	20	15
136-928	25	15
136-930	30	15
136-932	35	15
136-934	40	10
136-936	45	10
136-938	50	10
136-940	55	10
136-945	70	10

**10 X 1.50 METRIC 8.8**

Part #	LGTH	QTY
136-958	12	15
136-960	16	15
136-962	20	15
136-964	25	15
136-966	30	15
136-968	35	15
136-970	40	10
136-972	45	10
136-974	50	10

**METRIC FLANGE BOLTS**

**18-8 STAINLESS**



Part #	SIZE	QTY
136-710	10 X 1.50 FLANGE NUT	25
136-750	10 X 1.50 X 50 FLANGE BOLT	25

**SOCKET HEAD BOLTS 12.9**



**5 X .80 DIAMETER**

PART #	LGTH	QTY
137-110	10	25
137-111	12	25
137-120	20	25
137-130	30	25
137-134	40	25

**8 X 1.25 DIAMETER**

PART #	LGTH	QTY
137-312	12	25
137-315	15	25
137-320	20	25
137-325	25	25
137-330	30	25
137-335	35	25
137-340	40	25
137-350	50	25
137-360	60	25
137-370	70	25

**12 X 1.75 DIAMETER**

PART #	LGTH	QTY
137-520	20	10
137-525	25	10
137-530	30	10
137-540	40	10
135-545	45	10
137-550	50	10
137-560	60	10
137-568	100	10
137-572	160	10

**14 X 2.00 DIAMETER**

PART #	LGTH	QTY
137-575	30	10
137-577	35	10
137-579	40	10
137-581	45	10
135-583	50	10
135-587	60	10
137-591	70	10
137-595	80	10

**16 X 2.00 DIAMETER**

PART #	LGTH	QTY
137-646	40	10
137-650	60	10
137-652	65	10
137-660	75	10

**18 X 2.50 DIAMETER**

PART #	LGTH	QTY
137-850	40	10

**6 X 1.00 DIAMETER**

PART #	LGTH	QTY
137-210	10	25
137-212	12	25
137-215	15	25
137-220	20	25
137-225	25	25
137-230	30	25
137-238	50	25
137-248	110	25

**10 X 1.50 DIAMETER**

PART #	LGTH	QTY
137-415	15	25
137-420	20	25
137-425	25	25
137-430	30	25
137-435	35	25
137-440	40	25
137-450	50	25
137-460	60	25
137-480	80	25
137-490	90	25

**20 X 2.50 DIAMETER**

PART #	LGTH	QTY
137-890	65	10
137-905	100	10

**LOW PROFILE SOCKET HEAD BOLTS**



**16 X 2.00 DIAMETER**

PART #	LGTH	QTY
137-970	35	EA

**SOCKET HEAD BOLTS 12.9**



**5 X .80 DIAMETER**

PART #	LGTH	QTY
138-112	12	25
138-115	15	25
138-120	20	25

**10 X 1.50 DIAMETER**

PART #	LGTH	QTY
138-336	25	25
138-338	30	25
138-340	40	25
138-342	50	25
138-344	60	25
138-346	70	25

**6 X 1.00 DIAMETER**

PART #	LGTH	QTY
138-204	15	25
138-206	20	25
138-208	25	25
138-210	30	25

**12 X 1.75 DIAMETER**

PART #	LGTH	QTY
138-650	25	10
138-651	30	10
138-554	40	10
138-556	50	10

**8 X 1.25 DIAMETER**

PART #	LGTH	QTY
138-217	20	25
138-218	25	25
138-220	30	25
138-224	40	25

**14 X 2.00 DIAMETER**

PART #	LGTH	QTY
138-680	30	25

**16 X 2.00 DIAMETER**

PART #	LGTH	QTY
138-729	30	10
138-730	35	10
138-735	60	10

**STAINLESS SOCKET HEAD BOLTS**

**8 X 1.25 DIAMETER**

PART #	LGTH	QTY
140-200	35	25

**SOCKET BUTTON HEAD BOLTS 12.9**



Part #	SIZE	QTY
139-320	8 X 1.25 X 20	50
139-322	8 X 1.25 X 25	50

**METRIC PHIL OVAL HEAD MACHINE SCREWS**



Part #	SIZE	QTY
141-244	5 X .80 X 12	50
141-248	5 X .80 X 20	50

Part #	SIZE	QTY
141-260	6 X 1.00 X 10	50
141-262	6 X 1.00 X 12	50
141-266	6 X 1.00 X 20	50
141-268	6 X 1.00 X 25	50

Part #	SIZE	QTY
141-348	8 X 1.25 X 20	50

## METRIC PHIL HEAD MACHINE SCREWS



Part #	SIZE	QTY
141-125	4 X .70 X 8	50
141-127	4 X .70 X 10	50
141-129	4 X .70 X 16	50
141-134	4 X .70 X 30	50
141-136	4 X .70 X 40	50

Part #	SIZE	QTY
141-184	8 X 1.25 X 16	25
141-186	8 X 1.25 X 20	25
141-188	8 X 1.25 X 25	25
141-190	8 X 1.25 X 30	25
141-192	8 X 1.25 X 35	25
141-194	8 X 1.25 X 40	25
141-198	8 X 1.25 X 50	25

Part #	SIZE	QTY
141-140	5 X .80 X 8	50
141-142	5 X .80 X 10	50
141-144	5 X .80 X 12	50
141-146	5 X .80 X 16	50
141-148	5 X .80 X 20	50
141-150	5 X .80 X 25	50

Part #	SIZE	QTY
141-204	10 X 1.50 X 20	25
141-206	10 X 1.50 X 25	25
141-208	10 X 1.50 X 30	25
141-210	10 X 1.50 X 35	25
141-212	10 X 1.50 X 40	25

Part #	SIZE	QTY
141-160	6 X 1.00 X 10	50
141-162	6 X 1.00 X 12	50
141-164	6 X 1.00 X 16	50
141-166	6 X 1.00 X 20	50
141-168	6 X 1.00 X 25	50
141-170	6 X 1.00 X 30	50
141-172	6 X 1.00 X 35	25
141-174	6 X 1.00 X 40	25
141-176	6 X 1.00 X 45	25
141-178	6 X 1.00 X 50	25

**HIGH-COLLAR LOCK WASHERS**

**HIGH-COLLAR**

Part #	SIZE	QTY
150-095	1/4	50
150-096	5/16	50
150-097	3/8	50
150-098	1/2	25
150-099	5/8	25



**SOCKET HEAD BOLTS 12.9**



**6-32 DIAMETER**

Part #	LGTH	QTY
150-150	1/2	100
150-156	3/4	100
150-160	1	100

**10-32 DIAMETER**

Part #	LGTH	QTY
150-250	3/8	50
150-252	1/2	50
150-254	3/4	50
150-256	1	50
150-258	1-1/2	50
150-260	2	50

**8-32 DIAMETER**

Part #	LGTH	QTY
150-168	1/2	50
150-177	3/4	50
150-186	1	50

**1/4-20 DIAMETER**

Part #	LGTH	QTY
150-270	1/2	50
150-273	5/8	50
150-276	3/4	50
150-282	1	50
150-294	1-1/4	50
150-295	1-1/2	50
150-296	1-3/4	25
150-306	2	25
150-307	2-1/4	25
150-312	2-1/2	25
150-318	3	25
150-335	7	25

**10-24 DIAMETER**

Part #	LGTH	QTY
150-224	1/4	50
150-226	1/2	50
150-227	5/8	50
150-228	3/4	50
150-230	1	50
150-234	1-1/2	50
150-246	2	50

**SOCKET HEAD BOLTS 12.9**



**5/16-18 DIAMETER**

Part #	LGTH	QTY
150-349	1/2	50
150-351	3/4	50
150-357	1	50
150-371	1-1/4	50
150-372	1-1/2	50
150-373	1-3/4	25
150-381	2	25
150-393	2-1/2	25
150-394	2-3/4	25
150-399	3	25

**3/8-16 DIAMETER**

Part #	LGTH	QTY
150-435	1/2	50
150-440	3/4	50
150-447	1	50
150-450	1-1/4	50
150-456	1-1/2	50
150-459	1-3/4	25
150-462	2	25
150-465	2-1/4	25
150-468	2-1/2	25
150-474	3	25
150-483	3-1/2	25
150-489	4	25

**7/16-14 DIAMETER**

Part #	LGTH	QTY
150-517	1/2	25
150-521	3/4	25
150-523	7/8	25
150-525	1	25
150-527	1-1/4	25
150-531	1-1/2	25
150-534	1-3/4	25
150-540	2	25
150-544	2-1/4	25
150-546	2-1/2	25
150-548	2-3/4	25
150-552	3	25

**1/2-13 DIAMETER**

Part #	LGTH	QTY
150-589	1	25
150-590	1-1/4	25
150-591	1-1/2	25
150-592	1-3/4	25
150-597	2	25
150-606	2-1/2	25
150-612	3	25
150-627	4	10
150-633	4-1/2	10

**5/8-11 DIAMETER**

Part #	LGTH	QTY
150-640	2	10
150-642	2-1/2	10
150-644	3	10
150-646	3-1/2	10
150-648	4	10

**3/4-10 DIAMETER**

Part #	LGTH	QTY
150-686	2	10
150-688	2-1/2	10
150-690	3	10
150-692	3-1/2	10
150-694	4	10
150-708	7	10

**SOCKET HEAD BOLTS 12.9**



**7/8-9 DIAMETER**

Part #	LGTH	QTY
150-709	2	EA
150-710	8	EA

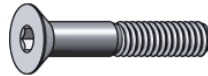
**1-8 DIAMETER**

Part #	LGTH	QTY
150-735	6	EA

**1-1/4-7 DIAMETER**

Part #	LGTH	QTY
150-750	3-1/2	EA

**FLAT SOCKET HEADS 12.9**



**6-32 DIAMETER**

Part #	LGTH	QTY
150-720	3/8	100
150-722	1/2	100
150-724	5/8	100
150-726	3/4	100
150-728	1	100

**8-32 DIAMETER**

Part #	LGTH	QTY
150-782	1/2	100
150-783	5/8	100
150-784	3/4	100
150-786	1	100

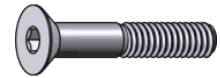
**10-24 DIAMETER**

Part #	LGTH	QTY
150-792	1/2	100
150-793	5/8	100
150-795	3/4	100
150-797	1	100

**10-32 DIAMETER**

Part #	LGTH	QTY
150-812	1/2	100
150-814	5/8	100
150-816	3/4	100
150-818	1	100

**FLAT SOCKET HEADS 12.9**



**1/4-20 DIAMETER**

Zinc #	Black #	LGTH	QTY
149-830	150-830	1/2	25
149-832	150-832	3/4	25
149-834	150-834	1	25
149-835	150-835	1-1/4	25
149-836	150-836	1-1/2	25

**5/16-18 DIAMETER**

Zinc #	Part #	LGTH	QTY
149-857	150-857	3/4	25
149-859	150-859	1	25
149-860	150-860	1-1/4	25
149-861	150-861	1-1/2	25
149-862	150-862	1-3/4	25

**3/8-16 DIAMETER**

Zinc #	Part #	LGTH	QTY
149-899	150-899	3/4	25
149-901	150-901	1	25
149-902	150-902	1-1/4	25
149-908	150-908	1-1/2	25
149-909	150-909	1-3/4	25
149-910	150-910	2	25
149-912	150-912	2-1/4	25
149-914	150-914	2-1/2	25

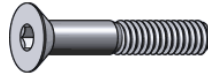
**7/16-14 DIAMETER**

Zinc #	Part #	LGTH	QTY
149-940	150-940	3/4	25
149-941	150-941	7/8	25
149-942	150-942	1	25
149-943	150-943	1-1/4	25
149-944	150-944	1-1/2	25

**1/2-13 DIAMETER**

Zinc #	Part #	LGTH	QTY
149-970	151-020	3/4	25
149-972	151-022	1	25
149-974	151-024	1-1/4	25
149-976	151-026	1-1/2	25
149-980	151-028	1-3/4	25
149-982	151-030	2	25
149-984	151-034	2-1/2	25
149-986	151-038	3	25
	151-040	3-1/2	25
	151-042	4	25
	151-044	4-1/2	25

**FLAT SOCKET HEADS 12.9**



**1/4-28 DIAMETER**

Part #	LGTH	QTY
152-320	3/4	25
152-322	1	25
152-324	1-1/4	25
152-326	1-1/2	25

**7/16-20 DIAMETER**

Part #	LGTH	QTY
152-384	3/4	25
152-386	1	25
152-388	1-1/4	25
152-390	1-1/2	25
152-392	1-3/4	25

**5/16-24 DIAMETER**

Part #	LGTH	QTY
152-340	3/4	25
152-342	1	25
152-344	1-1/4	25
152-346	1-1/2	25

**1/2-20 DIAMETER**

Part #	LGTH	QTY
152-430	3/4	25
152-432	1	25
152-434	1-1/4	25
152-436	1-1/2	25
152-438	1-3/4	25

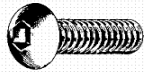
**3/8-24 DIAMETER**

Part #	LGTH	QTY
152-360	3/4	25
152-362	1	25
152-364	1-1/4	25
152-366	1-1/2	25
152-368	1-3/4	25

**5/8-18 DIAMETER**

Part #	LGTH	QTY
152-485	1	10
152-490	2	10

**BUTTON HEAD SOCKETS 12.9**



**1/4-20 DIAMETER**

Part #	LGTH	QTY
152-050	3/8	50
152-051	1/2	50
152-054	3/4	50
152-056	1	50

**5/16-18 DIAMETER**

Part #	LGTH	QTY
152-074	1/2	50
152-076	3/4	50
152-078	1	50

**3/8-16 DIAMETER**

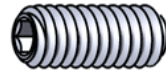
Part #	LGTH	QTY
152-130	1/2	50
152-132	3/4	50
152-134	1	50
152-136	1-1/4	50

**12 POINT BOLTS**



Part #	SIZE	QTY
161-200	10 X 1.50 X 35	100

Part #	SIZE	QTY
161-500	3/4-16 X 4	25

**USS SET SCREWS****4-40 DIAMETER**

Part #	LGTH	QTY
153-476	3/16	100

**5-40 DIAMETER**

Part #	LGTH	QTY
153-500	3/16	100

**6-32 DIAMETER**

Part #	LGTH	QTY
153-530	1/4	100
153-538	1/2	100
153-540	5/8	100
153-542	3/4	100

**8-32 DIAMETER**

Part #	LGTH	QTY
153-561	3/16	100
153-563	1/4	100
153-565	5/16	100
153-569	3/8	100
153-575	1/2	100
153-577	5/8	100
153-579	3/4	100

**10-24 DIAMETER**

Part #	LGTH	QTY
153-590	3/16	100
153-592	1/4	100
153-594	5/16	100
153-596	3/8	100
153-598	7/16	100
153-600	1/2	100
153-602	5/8	100
153-604	3/4	100
153-606	1	100

**10-32 DIAMETER**

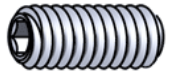
Part #	LGTH	QTY
153-614	3/16	100
153-616	1/4	100
153-618	5/16	100
153-620	3/8	100
153-622	7/16	100
153-624	1/2	100
153-626	5/8	100
153-628	3/4	100
153-630	1	100

**1/4-20 DIAMETER**

Part #	LGTH	QTY
153-644	1/4	50
153-646	5/16	50
153-648	3/8	50
153-650	7/16	50
153-652	1/2	50
153-654	5/8	50
153-656	3/4	50
153-658	1	50

**5/16-18 DIAMETER**

Part #	LGTH	QTY
153-672	1/4	25
153-674	5/16	25
153-676	3/8	25
153-678	7/16	25
153-680	1/2	25
153-682	5/8	25
153-684	3/4	25
153-686	1	25

**USS SET SCREWS****3/8-16 DIAMETER**

Part #	LGTH	QTY
153-702	3/8	25
153-704	1/2	25
153-706	5/8	25
153-708	3/4	25
153-710	1	25
153-712	1-1/4	25

**7/16-14 DIAMETER**

Part #	LGTH	QTY
153-722	3/8	25
153-726	1/2	25
153-780	5/8	25
153-782	3/4	25
153-784	1	25

**1/2-13 DIAMETER**

Part #	LGTH	QTY
153-790	1/2	25
153-794	3/4	25
153-796	1	25
153-800	1-1/2	25

**5/8-11 DIAMETER**

Part #	LGTH	QTY
153-814	3/8	10
153-816	1/2	10
153-818	5/8	10
153-820	3/4	10
153-822	1	10

**3/4-10 DIAMETER**

Part #	LGTH	QTY
153-846	1/2	10
153-848	5/8	10
153-850	3/4	10
153-852	1	10
153-846	1-1/2	10
153-848	1-3/4	10
153-850	2	10
153-854	3	10

**SAE SET SCREWS**



**1/4-28 DIAMETER**

Part #	LGTH	QTY
153-906	1/4	50
153-908	5/16	50
153-910	3/8	50
153-912	7/16	50
153-914	1/2	50
153-916	5/8	50
153-918	3/4	50
153-920	1	50

**7/16-20 DIAMETER**

Part #	LGTH	QTY
153-970	3/8	25
153-972	1/2	25

**1/2-20 DIAMETER**

Part #	LGTH	QTY
153-982	1/2	25
153-986	3/4	25
153-988	1	25

**5/8-18 DIAMETER**

Part #	LGTH	QTY
154-014	3/8	10
154-016	1/2	10
154-018	5/8	10
154-020	3/4	10
154-022	1	10

**3/4-16 DIAMETER**

Part #	LGTH	QTY
154-046	1/2	10
154-048	5/8	10
154-050	3/4	10
154-052	1	10

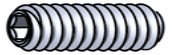
**5/16-24 DIAMETER**

Part #	LGTH	QTY
153-930	1/4	25
153-932	5/16	25
153-934	3/8	25
153-936	7/16	25
153-938	1/2	25
153-940	5/8	25
153-942	3/4	25
153-944	1	25

**3/8-24 DIAMETER**

Part #	LGTH	QTY
153-952	1/2	25
153-954	5/8	25
153-956	3/4	25
153-958	1	25
153-960	1-1/4	25

**METRIC SET SCREWS**



**4 X .70 DIAMETER**

Part #	LGTH	QTY
155-534	8	25
155-536	10	25

**5 X .80 DIAMETER**

Part #	LGTH	QTY
155-554	8	25
155-556	10	25
155-560	16	25

**6 X 1.00 DIAMETER**

Part #	LGTH	QTY
155-574	8	25
155-576	10	25
155-580	16	25
155-586	20	25

**8 X 1.25 DIAMETER**

Part #	LGTH	QTY
155-592	10	25
155-596	16	25
155-600	20	25
155-602	25	25

**10 X 1.50 DIAMETER**

Part #	LGTH	QTY
155-620	10	25
155-622	12	25
155-624	16	25
155-626	20	25
155-628	30	25

**12 X 1.75 DIAMETER**

Part #	LGTH	QTY
155-646	16	25
155-648	20	25
155-650	30	25

**16 X 2.00 DIAMETER**

Part #	LGTH	QTY
155-710	25	25

**SQUARE HEAD SET SCREW**



**3/8-16 DIAMETER**

Part #	LGTH	QTY
154-125	3/4	25
154-127	1	25
154-129	1-1/4	25

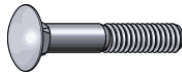
**STAINLESS 3/8-16 DIAMETER**

Part #	LGTH	QTY
154-125	3/4	50

**SOCKET SHOLDER BOLTS**



**CARRIAGE BOLTS ZINC**



**1/4-20 DIAMETER**

Part #	LGTH	QTY
156-022	3/4	100
156-023	1	100
156-024	1-1/4	100
156-025	1-1/2	100
156-026	1-3/4	100
156-027	2	100
156-029	2-1/2	50
156-031	3	50
156-035	4	50
156-039	5	50
156-043	6	50
156-045	7	50
156-047	8	50

**5/16-18 DIAMETER**

Part #	LGTH	QTY
156-053	1	100
156-054	1-1/4	100
156-055	1-1/2	100
156-057	2	100
156-058	2-1/4	50
156-059	2-1/2	50
156-061	3	50
156-062	3-1/2	50
156-063	4	50
156-065	5	25
156-067	6	25
156-069	7	25
156-071	8	25

**7/16-13 DIAMETER**

Part #	LGTH	QTY
156-100	1-1/4	50
156-101	1-1/2	50
156-103	2	50
156-105	2-1/2	50

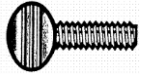
**1/2-13 DIAMETER**

Part #	LGTH	QTY
156-113	1	50
156-114	1-1/4	50
156-115	1-1/2	50
156-117	2	50
156-119	2-1/2	25
156-121	3	25
156-123	3-1/2	25
156-125	4	25
156-127	4-1/2	25
156-129	5	10
156-133	6	10
156-137	7	10
156-141	8	10

**3/8-16 DIAMETER**

Part #	LGTH	QTY
156-072	3/4	100
156-073	1	100
156-074	1-1/4	100
156-075	1-1/2	100
156-076	1-3/4	100
156-077	2	50
156-078	2-1/4	50
156-079	2-1/2	50
156-080	2-3/4	50
156-081	3	50
156-083	3-1/2	25
156-085	4	25
156-087	4-1/2	25
156-089	5	25
156-093	6	25
156-095	7	25
156-097	8	25
156-098	9	25

**THUMB SCREWS**



**1/4-20 DIAMETER**

Part #	LGTH	QTY
157-355	3/4	25

**LAG BOLTS ZINC**



**1/4 HEX LAGS**

Part #	LGTH	QTY
158-415	3/4	50
158-416	1	50
158-417	1-1/4	50
158-418	1-1/2	50
158-420	2	50

**5/16 HEX LAGS**

Part #	LGTH	QTY
158-495	3/4	50
158-496	1	50
158-499	1-1/4	50
158-500	1-1/2	25
158-501	1-3/4	25
158-502	2	25
158-504	2-1/2	25
158-506	3	25

**3/8 HEX LAGS**

Part #	LGTH	QTY
158-599	3/4	25
158-600	1	25
158-601	1-1/4	25
158-602	1-1/2	25
158-604	2	25
158-606	2-1/2	25
158-608	3	25
158-610	3-1/2	25
158-612	4	25
158-618	5	25
158-624	7	25

**PLOW BOLTS GRADE 5**



**1/2-13 DIAMETER**

Part #	LGTH	QTY
158-725	2	25

**5/8-11 DIAMETER**

Part #	LGTH	QTY
158-756	2	25
158-758	2-1/2	25
158-760	3	25
158-762	3-1/2	25
158-766	4	25

**PLOW BOLTS GRADE 8**

**5/8-11 DIAMETER**

Part #	LGTH	QTY
159-046	2	25
159-048	2-1/2	25
159-050	3	25
159-052	3-1/2	25
159-055	3-3/4	25
159-056	4	25



**7/8-9 DIAMETER**

Part #	LGTH	QTY
159-165	3	25
159-169	4	25

**3/4-10 DIAMETER**

Part #	LGTH	QTY
159-120	2-1/2	25
159-124	3	25

**1-8 DIAMETER**

Part #	LGTH	QTY
159-189	3	25

**CARRIAGE BOLTS GRADE 5**

**5/8-11 DIAMETER**

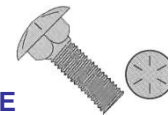
Part #	LGTH	QTY
159-470	2-1/2	25
159-475	3	25
159-480	4	25



**CARRIAGE BOLTS GRADE 8**

**1/2-13 DIAMETER**

Part #	LGTH	QTY
159-550	2	25
159-552	2-1/4	25
159-553	2-1/2	25
159-556	3	25



**5/8-11 DIAMETER**

Part #	LGTH	QTY
159-570	2-1/2	25
159-572	3	25
159-578	3-1/2	25
159-580	4	25

**PHILLIPS BINDING HEAD MACHINE SCREW ZINC**



**4-40 DIAMETER**

Part #	SIZE	QTY
165-005	4-40 X 3/4	100

**5-40 DIAMETER**

Part #	SIZE	QTY
165-009	5-40 X 3/4	100

**6-32 DIAMETER**

Part #	SIZE	QTY
165-031	6-32 X 3/8	100
165-032	6-32 X 1/2	100
165-034	6-32 X 3/4	100
165-035	6-32 X 1	100
165-036	6-32 X 1-1/4	50
165-038	6-32 X 1-1/2	50
165-042	6-32 X 2	50

**8-32 DIAMETER**

Part #	SIZE	QTY
165-051	8-32 X 3/8	100
165-052	8-32 X 1/2	100
165-054	8-32 X 3/4	100
165-055	8-32 X 1	100
165-056	8-32 X 1-1/4	50
165-057	8-32 X 1-1/2	50
165-059	8-32 X 2	25

**10-24 DIAMETER**

Part #	SIZE	QTY
165-072	10-24 X 3/8	50
165-073	10-24 X 1/2	50
165-074	10-24 X 3/4	50
165-075	10-24 X 1	50
165-076	10-24 X 1-1/4	50
165-077	10-24 X 1-1/2	25
165-079	10-24 X 2	25
165-081	10-24 X 2-1/2	25
165-083	10-24 X 3	25
165-087	10-24 X 4	25
165-091	10-24 X 5	25

**10-32 DIAMETER**

Part #	SIZE	QTY
165-110	10-32 X 3/8	50
165-112	10-32 X 1/2	50
165-114	10-32 X 3/4	50
165-115	10-32 X 1	50
165-116	10-32 X 1-1/4	50
165-117	10-32 X 1-1/2	50
165-119	10-32 X 2	25

**1/4-20 DIAMETER**

Part #	SIZE	QTY
165-150	1/4-20 X 3/8	50
165-152	1/4-20 X 1/2	50
165-154	1/4-20 X 3/4	50
165-155	1/4-20 X 1	50
165-156	1/4-20 X 1-1/4	25
165-157	1/4-20 X 1-1/2	25
165-158	1/4-20 X 1-3/4	25
165-159	1/4-20 X 2	25
165-163	1/4-20 X 3	25
159-167	1/4-20 X 4	25
165-171	1/4-20 X 5	25

**12-24 DIAMETER**

Part #	SIZE	QTY
165-122	12-24 X 1/2	50
165-125	12-24 X 3/4	50
165-126	12-24 X 1	50
165-128	12-24 X 1-1/2	25

**PHILLIPS FLAT HEAD MACHINE SCREW ZINC**



**6-32 DIAMETER**

Part #	SIZE	QTY
165-232	6-32 X 1/2	100
165-238	6-32 X 3/4	100
165-242	6-32 X 1	100
165-244	6-32 X 1-1/4	50
165-246	6-32 X 1-1/2	50
165-248	6-32 X 2	50

**8-32 DIAMETER**

Part #	SIZE	QTY
165-262	8-32 X 1/2	100
165-266	8-32 X 3/4	100
165-270	8-32 X 1	100
165-272	8-32 X 1-1/4	50
165-274	8-32 X 1-1/2	50
165-276	8-32 X 2	25

**10-24 DIAMETER**

Part #	SIZE	QTY
165-288	10-24 X 1/2	50
165-294	10-24 X 3/4	50
165-298	10-24 X 1	50
165-300	10-24 X 1-1/4	50
165-302	10-24 X 1-1/2	50
165-306	10-24 X 2	25

**10-32 DIAMETER**

Part #	SIZE	QTY
165-320	10-32 X 1/2	50
165-324	10-32 X 3/4	50
165-328	10-32 X 1	50
165-330	10-32 X 1-1/4	50
165-332	10-32 X 1-1/2	50
165-336	10-32 X 2	25

**12-24 DIAMETER**

Part #	SIZE	QTY
165-344	12-24 X 1/2	50
165-348	12-24 X 3/4	50
165-352	12-24 X 1	50
165-356	12-24 X 1-1/2	25

**1/4-20 DIAMETER**

Part #	SIZE	QTY
165-360	1/4-20 X 1/2	25
165-364	1/4-20 X 3/4	25
165-368	1/4-20 X 1	25
165-370	1/4-20 X 1-1/4	25
165-372	1/4-20 X 1-1/2	25
165-374	1/4-20 X 1-3/4	25
165-376	1/4-20 X 2	25
165-384	1/4-20 X 3	25

**5/16-18 DIAMETER**

Part #	SIZE	QTY
	5/16-18 X 1	25

**PHILLIPS OVAL HEAD MACHINE SCREWS ZINC**



**1/4-20 DIAMETER**

Part #	SIZE	QTY
165-453	1/4-20 X 5/8	25
165-454	1/4-20 X 3/4	25

**PHILLIPS PAN HEAD SHEET METAL ZINC**



**#6 DIAMETER**

Part #	SIZE	QTY
166-001	6 X 3/8	100
166-002	6 X 1/2	100
166-004	6 X 3/4	100
166-005	6 X 1	100
166-006	6 X 1-1/4	50
166-008	6 X 1-1/2	50
166-012	6 X 2	50

**#8 DIAMETER**

Part #	SIZE	QTY
166-021	8 X 3/8	100
166-022	8 X 1/2	100
166-023	8 X 5/8	100
166-024	8 X 3/4	100
166-025	8 X 1	100
166-026	8 X 1-1/4	50
166-027	8 X 1-1/2	50
166-028	8 X 1-3/4	50
166-029	8 X 2	50

**#10 DIAMETER**

Part #	SIZE	QTY
166-041	10 X 3/8	100
166-042	10 X 1/2	100
166-043	10 X 5/8	100
166-044	10 X 3/4	100
166-045	10 X 1	100
166-046	10 X 1-1/4	50
166-047	10 X 1-1/2	50
166-049	10 X 2	50
166-051	10 X 2-1/2	50

**#12 DIAMETER**

Part #	SIZE	QTY
166-062	12 X 1/2	50
166-063	12 X 5/8	50
166-064	12 X 3/4	50
166-065	12 X 1	50
166-066	12 X 1-1/4	25
166-067	12 X 1-1/2	25
166-068	12 X 1-3/4	25
166-069	12 X 2	25
166-071	12 X 2-1/2	25

**#14 DIAMETER**

Part #	SIZE	QTY
166-082	14 X 1/2	50
166-083	14 X 5/8	50
166-084	14 X 3/4	50
166-085	14 X 1	50
166-086	14 X 1-1/4	25
166-087	14 X 1-1/2	25
166-088	14 X 1-3/4	25
166-089	14 X 2	25
166-091	14 X 2-1/2	25

**PHILLIPS OVAL HEAD SHEET METAL ZINC**



**#6 DIAMETER**

Part #	SIZE	QTY
166-102	6 X 1/2	100
166-104	6 X 3/4	100
166-105	6 X 1	100
166-106	6 X 1-1/4	50
166-107	6 X 1-1/2	50
166-109	6 X 2	50

**#8 DIAMETER**

Part #	SIZE	QTY
166-122	8 X 1/2	100
166-124	8 X 3/4	100
166-125	8 X 1	100
166-126	8 X 1-1/4	50
166-127	8 X 1-1/2	50
166-129	8 X 2	50

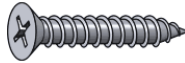
**#10 DIAMETER**

Part #	SIZE	QTY
166-140	10 X 1/2	100
166-144	10 X 3/4	100
166-145	10 X 1	100
166-146	10 X 1-1/4	50
166-147	10 X 1-1/2	50
166-149	10 X 2	50

**#12 DIAMETER**

Part #	SIZE	QTY
166-160	12 X 1/2	50
166-164	12 X 3/4	50
166-165	12 X 1	50
166-166	12 X 1-1/4	50
166-167	12 X 1-1/2	50
166-169	12 X 2	25

**PHILLIPS FLAT HEAD SHEET METAL ZINC**



**#4 DIAMETER**

Part #	SIZE	QTY
166-180	4 X 1/2	100
166-182	4 X 3/4	100

**#6 DIAMETER**

Part #	SIZE	QTY
166-202	6 X 1/2	100
166-204	6 X 3/4	100
166-205	6 X 1	100
166-206	6 X 1-1/4	50
166-207	6 X 1-1/2	50
166-209	6 X 2	50

**#10 DIAMETER**

Part #	SIZE	QTY
166-240	10 X 1/2	100
166-244	10 X 3/4	100
166-245	10 X 1	100
166-246	10 X 1-1/4	50
166-247	10 X 1-1/2	50
166-249	10 X 2	50

**#8 DIAMETER**

Part #	SIZE	QTY
166-222	8 X 1/2	100
166-224	8 X 3/4	100
166-225	8 X 1	100
166-226	8 X 1-1/4	50
166-227	8 X 1-1/2	50
166-229	8 X 2	50

**#12 DIAMETER**

Part #	SIZE	QTY
166-260	12 X 1/2	50
166-264	12 X 3/4	50
166-265	12 X 1	50
166-266	12 X 1-1/4	50
166-267	12 X 1-1/2	50
166-269	12 X 2	25

**BLACK PHILLIP OVAL TAPPING SCREW**



**#6 DIAMETER**

Part #	SIZE	QTY
166-322	6 X 1/2	50
166-324	6 X 3/4	50
166-326	6 X 1	50

**#8 DIAMETER**

Part #	SIZE	QTY
166-338	8 X 1/2 (#6 HEAD)	50
166-340	8 X 1/2	50
166-344	8 X 3/4 (#6 HEAD)	50
166-346	8 X 3/4	50
166-350	8 X 1 (#6 HEAD)	50
166-352	8 X 1	50

**#10 DIAMETER**

Part #	SIZE	QTY
166-365	10 X 1/2 (#8 HEAD)	50
166-367	10 X 1/2	50
166-370	10 X 3/4 (#8 HEAD)	50
166-372	10 X 3/4	50
166-374	10 X 1 (#8 HEAD)	50
166-376	10 X 1	50
166-378	10 X 1-1/4 (#8 HEAD)	50
166-380	10 X 1-1/4	50
166-382	10 X 1-1/2 (#8 HEAD)	25
166-384	10 X 1-1/2	25

**BLACK PHILLIPS BINDING HEAD SHEET METAL**



Part #	SIZE	QTY
166-460	8 X 1/2	50
166-462	8 X 3/4	50
166-464	8 X 1	50
166-468	10 X 1/2	50
166-470	10 X 3/4	50
166-472	10 X 1	50

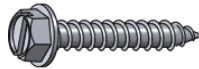
**SLOTTED TRUSS HEAD SHEET METAL ZINC**



**#14 DIAMETER**

Part #	SIZE	QTY
166-854	14 X 3/4	100

**HEX HEAD SHEET METAL SCREWS ZINC**



**#6 DIAMETER**

Part #	SIZE	QTY
167-008	6 X 3/8	50
167-010	6 X 1/2	50
167-012	6 X 3/4	50
167-014	6 X 1	50

**#8 DIAMETER**

Part #	SIZE	QTY
167-022	8 X 1/2	50
167-023	8 X 5/8	50
167-024	8 X 3/4	50
167-025	8 X 1	50
167-026	8 X 1-1/4	50
167-027	8 X 1-1/2	25

**#10 DIAMETER**

Part #	SIZE	QTY
167-042	10 X 1/2	50
167-043	10 X 5/8	50
167-044	10 X 3/4	50
167-045	10 X 1	50
167-046	10 X 1-1/4	50
167-047	10 X 1-1/2	25

**#12 DIAMETER**

Part #	SIZE	QTY
167-062	12 X 1/2	50
167-064	12 X 3/4	50
167-065	12 X 1	50
167-066	12 X 1-1/4	50
167-067	12 X 1-1/2	25
167-069	12 X 2	25

**#14 DIAMETER**

Part #	SIZE	QTY
167-081	14 X 1/2	50
167-082	1/4 X 5/8	50
167-083	14 X 3/4	50
167-085	14 X 1	50
167-086	14 X 1-1/4	25
167-087	14 X 1-1/2	25
167-089	14 X 2	25
167-091	14 X 2-1/2	25
167-093	14 X 3	25
167-097	14 X 4	25

**5/16 DIAMETER**

Part #	SIZE	QTY
167-104	5/16 X 3/4	25
167-106	5/16 X 1	25
167-108	5/16 X 1-1/4	25
167-109	5/16 X 1-1/2	25

**3/8 DIAMETER**

Part #	SIZE	QTY
167-133	3/8 X 3/4	25
167-135	3/8 X 1	25
167-137	3/8 X 1-1/4	25
167-139	3/8 X 1-1/2	25

**TEKS HEX HEAD SHEET METAL ZINC**



**#6 DIAMETER**

Part #	SIZE	Drive	QTY
168-001	6 X 1/2	1/4	100
168-003	6 X 3/4	1/4	100
168-004	6 X 1	1/4	100

**#8 DIAMETER**

Part #	SIZE	Drive	QTY
168-010	8 X 1/2	1/4	100
168-011	8 X 5/8	1/4	100
168-012	8 X 3/4	1/4	100
168-013	8 X 1	1/4	100
168-014	8 X 1-1/4	1/4	50
168-015	8 X 1-1/2	1/4	50

**#10 DIAMETER**

Part #	SIZE	Drive	QTY
168-020	10 X 1/2	5/16	100
168-021	10 X 5/8	5/16	100
168-022	10 X 3/4	5/16	100
168-023	10 X 1	5/16	100
168-024	10 X 1-1/4	5/16	50
168-026	10 X 1-1/2	5/16	50

**#12 DIAMETER**

Part #	SIZE	Drive	QTY
168-042	12 X 3/4	5/16	50
168-043	12 X 1	5/16	50
168-044	12 X 1-1/4	5/16	50
168-046	12 X 1-1/2	5/16	50
168-048	12 X 1-3/4	5/16	25
168-049	12 X 2	5/16	25
168-050	12 X 2-1/2	5/16	25

**#1/4 DIAMETER**

Part #	SIZE	Drive	QTY
168-062	14 X 3/4	3/8	50
168-063	14 X 1	3/8	50
168-064	14 X 1-1/4	3/8	50
168-065	14 X 1-1/2	3/8	50
168-067	14 X 2	3/8	25
168-069	14 X 2-1/2	3/8	25
168-071	14 X 3	3/8	25



**#14 WITH RUBBER WASHER**

Part #	SIZE	QTY
168-162	14 X 3/4	50
168-163	14 X 1	50
168-164	14 X 1-1/4	50
168-165	14 X 1-1/2	50
166-166	14 X 1-3/4	50



**#12 WITH CLIMASEAL HEAVY DUTY**

Part #	SIZE	QTY
168-250	12 X 7/8	25
168-256	12 X 1-1/4	25
168-260	12 X 1-1/2	25
168-268	12 X 2	25

**TEKS PHILLIPS BINDING HEAD ZINC**



**#6 PHILLIPS BINDING HEAD**

Part #	SIZE	DRIVE	QTY
168-501	6 X 3/8	#1	100
168-502	6 X 1/2	#1	100
168-503	6 X 5/8	#1	100
168-505	6 X 3/4	#1	100
168-506	6 X 1	#1	100

**#8 PHILLIPS BINDING HEAD**

Part #	SIZE	DRIVE	QTY
168-510	8 X 1/2	#2	100
168-511	8 X 5/8	#2	100
168-512	8 X 3/4	#2	100
168-514	8 X 1	#2	100
168-515	8 X 1-1/4	#2	50
168-516	8 X 1-1/2	#2	50

**#10 PHILLIPS BINDING HEAD**

Part #	SIZE	DRIVE	QTY
168-520	10 X 1/2	#2	100
168-521	10 X 5/8	#2	100
168-522	10 X 3/4	#2	100
168-524	10 X 1	#2	100
168-525	10 X 1-1/4	#2	50
168-526	10 X 1-1/2	#2	50
168-528	10 x 2	#2	25

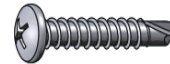
**#12 PHILLIPS BINDING HEAD**

Part #	SIZE	DRIVE	QTY
168-533	12 X 3/4	#2	50
168-534	12 X 1	#2	50
168-535	12 X 1-1/4	#2	25
168-536	12 x 1-1/2	#2	25
168-538	12 x 2	#2	25

**#14 PHILLIPS BINDING HEAD**

Part #	SIZE	DRIVE	QTY
168-542	14 X 3/4	#2	25
168-544	14 X 1	#2	25
168-545	14 X 1-1/4	#2	25
168-547	14 X 1-1/2	#2	25

**TEKS PHILLIPS BINDING HEAD BLACK**



**#8 PHILLIPS BINDING HEAD**

Part #	SIZE	DRIVE	QTY
168-562	8 X 1/2	#2	50
168-564	8 X 3/4	#2	50
168-566	8 X 1	#2	50

**#8 PHILLIPS BINDING HEAD**

Part #	SIZE	DRIVE	QTY
168-570	10 X 1/2	#2	50
168-572	10 X 3/4	#2	50
168-574	10 X 1	#2	50

**TEKS PHILLIPS FLAT HEAD ZINC**



**#8 PHILLIPS FLAT HEAD**

Part #	SIZE	DRIVE	QTY
168-610	8 X 1/2	#2	100
168-612	8 X 3/4	#2	100
168-613	8 X 1	#2	100

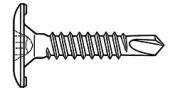
**#10 PHILLIPS FLAT HEAD**

Part #	SIZE	DRIVE	QTY
168-620	10 X 1/2	#2	100
168-622	10 X 3/4	#2	100
168-624	10 X 1	#2	100
168-625	10 X 1-1/4	#2	50
168-626	10 X 1-1/2	#2	50

**#14 PHILLIPS FLAT HEAD**

Part #	SIZE	DRIVE	QTY
168-643	14-14 X 3/4	#2	50
168-645	14-14 X 1	#2	50
168-646	14-14 X 1-1/4	#2	25
168-647	14-14 X 1-1/2	#2	25
168-649	14-14 X 2	#2	25
168-651	14-14 X 2-1/2	#2	25
168-653	14-14 X 3	#2	25

**TEKS LARGE FLAT HEAD PHIL ZINC**



**# 10 LARGE FLAT HEAD TEKS (TORK 25 DRIVER)**

Part #	SIZE	DRIVE	QTY
168-746	10 X 3/4	T-25	50
168-748	10 X 1	T-25	50
168-750	10 X 1-1/4	T-25	50
168-752	10 X 1-1/2	T-25	50

**# 10 LARGE FLAT PHILLIP HEAD TEKS (#2 DRIVER)**

Part #	SIZE	DRIVE	QTY
168-780	10 X 3/4	POZI	50
168-782	10 X 1	POZI	50
168-784	10 X -1/4	POZI	50



**TEKS PHILLIPS LARGE WASHER HEAD ZINC**



**#8 PHILLIPS BINDING HEAD**

Part #	SIZE	DRIVE	QTY
168-845	8 X 1/2	#2	50

**#8 PHILLIPS BINDING HEAD**

Part #	SIZE	DRIVE	QTY
168-850	8 X 1/2	#2	50
168-854	8 X 3/4	#2	50
168-858	8 X 1	#2	50
168-862	8 X 1-1/4	#2	50

**#8 PHILLIPS LOW PROFILE BINDING HEAD**

Part #	SIZE	DRIVE	QTY
168-848	8 X 1/2	#2	50



**TEKS PHILLIPS LARGE WASHER HEAD BLACK**



**#8 PHILLIPS BINDING HEAD**

Part #	SIZE	DRIVE	QTY
168-881	8 X 1/2	#2	50
168-885	8 X 3/4	#2	50
168-889	8 X 1	#2	50

**PHILLIPS LARGE WASHER HEAD ZINC**



**#8 PHILLIPS BINDING HEAD**

Part #	SIZE	DRIVE	QTY
168-924	8 X 1/2	#2	50
168-928	8 X 3/4	#2	50
168-932	8 X 1	#2	50

**#8 PHILLIPS BINDING HEAD**

Part #	SIZE	DRIVE	QTY
168-944	10 X 1/2	#2	50
168-948	10 X 3/4	#2	50

**PHILLIPS LARGE WASHER HEAD BLACK**



**#8 PHILLIPS BINDING HEAD**

Part #	SIZE	DRIVE	QTY
168-960	8 X 1/2	#2	50
168-964	8 X 3/4	#2	50
168-968	8 X 1	#2	50
168-972	8 X 1-1/4	#2	50
168-976	8 X 1-1/2	#2	25
168-980	8 X 2	#2	25

**#8 PHILLIPS BINDING HEAD**

Part #	SIZE	DRIVE	QTY
168-986	10 X 3/4	#2	50
168-990	10 X 1	#2	50
168-994	10 X 1-1/4	#2	25

**PHILLIPS BINDING "F" HEAD THREAD CUTTING ZINC**



**#6-32 PHILLIPS TYPE F THREAD CUTTER**

Part #	SIZE	DRIVE	QTY
169-017	3/8	#2	100
169-018	1/2	#2	100
169-020	5/8	#2	100
169-022	3/4	#2	100

**#8-32 PHILLIPS TYPE F THREAD CUTTER**

Part #	SIZE	DRIVE	QTY
169-038	1/2	#2	100
169-042	3/4	#2	100
169-046	1	#2	100

**#10-24 PHILLIPS TYPE F THREAD CUTTER**

Part #	SIZE	DRIVE	QTY
169-054	1/2	#2	100
169-056	5/8	#2	100
169-058	3/4	#2	100
169-060	1	#2	100

**#10-32 PHILLIPS TYPE F THREAD CUTTER**

Part #	SIZE	DRIVE	QTY
169-066	3/8	#2	100
169-068	1/2	#2	100
169-072	3/4	#2	100
169-074	1	#2	100

**#12-24 PHILLIPS TYPE F THREAD CUTTER**

Part #	SIZE	DRIVE	QTY
169-082	3/4	#2	50
169-084	1	#2	50

**1/4-20 PHILLIP TYPE F  
THREAD CUTTER**

Part #	SIZE	DRIVE	QTY
169-086	3/8	#2	50
169-088	1/2	#2	50
169-094	3/4	#2	50
169-096	1	#2	50
169-098	1-1/4	#2	50
169-099	1-1/2	#2	50

**HEX HEAD "F" THREAD CUT ZINC**



**#8-32 HEX HEAD THREAD CUTTER**

Part #	SIZE	Drive	QTY
169-224	1/2	1/4	100

**#10-24 HEX HEAD THREAD CUTTER**

Part #	SIZE	Drive	QTY
169-254	1/2	1/4	100
169-258	3/4	1/4	100
169-260	1	1/4	100

**#12-24 HEX HEAD THREAD CUTTER**

Part #	SIZE	Drive	QTY
169-270	3/4	1/4	100

**14-20 HEX HEAD THREAD CUTTER**

Part #	SIZE	Drive	QTY
169-290	1/2	5/16	50
169-294	3/4	5/16	50
169-295	1	5/16	50
169-296	1-1/4	5/16	50
169-297	1-1/2	5/16	25

**5/16-18 HEX HEAD THREAD CUTTER**

Part #	SIZE	Drive	QTY
169-314	3/4	3/8	25
169-316	1	3/8	25
169-318	1-1/4	3/8	25
169-320	1-1/2	3/8	25
169-322	1-3/4	3/8	25

**3/8-16 HEX HEAD THREAD CUTTER**

Part #	SIZE	Drive	QTY
169-342	3/4	3/8	25
169-343	1	3/8	25
169-344	1-1/4	3/8	25
169-345	1-1/2	3/8	25

**SLOTTED BINDING "F" HEAD THREAD CUTTING ZINC**



**#10-24 SLOTTED THREAD CUTTER**

Part #	SIZE	QTY
169-500	3/4	100

**1/4-20 FLOOR BOARD SCREWS (USE 7/32 OR "F" DRILL)**

Part #	SIZE	QTY
171-103	1/4-20 X 1	100
171-105	1/4-20 X 1-1/4	100
171-110	1/4-20 X 1-1/2	100
171-115	1/4-20 X 2	100
171-119	1/4-20 X 2-1/4	100
171-120	1/4-20 X 2-1/2	100
171-122	1/4-20 X 3	100
171-124	1/4-20 X 3-1/2	100
171-126	1/4-20 X 4	100

**5/16-20 FLOOR BOARD SCREWS (USE 9/32 OR "L" DRILL)**

Part #	SIZE	QTY
171-132	5/16-18 X 1	50
171-134	5/16-18 X 1-1/4	50
171-136	5/16-18 X 1-1/2	50
171-140	5/16-18 X 2	50
171-145	5/16-18 X 2-1/4	50
171-155	5/16-18 X 2-1/2	50
171-160	5/16-18 X 3	50

**TORKS DRIVERS**  
**(ALSO SEE TOOL SECTION PG 400)**



**COTTER PINS**



**1/16" COTTER PINS**

Part #	SIZE	QTY
191-000	1/16 X 1/2	100
191-001	1/16 X 3/4	100
191-002	1/16 X 1	100
191-003	1/16 X 1-1/4	100
191-004	1/16 X 1-1/2	100
191-006	1/16 X 2	100

**5/64" COTTER PINS**

Part #	SIZE	QTY
191-018	5/64 X 1	100
191-022	5/64 X 2	100

**COTTER PINS**



**3/16" COTTER PINS**

Part #	SIZE	QTY
191-200	3/16 X 3/4	50
191-201	3/16 X 1	50
191-202	3/16 X 1-1/4	50
191-204	3/16 X 1-1/2	50
191-205	3/16 X 1-3/4	50
191-206	3/16 X 2	50
191-207	3/16 X 2-1/4	50
191-208	3/16 X 2-1/2	25
191-210	3/16 X 3	25
191-214	3/16 X 4	25

**1/4" COTTER PINS**

Part #	SIZE	QTY
191-242	1/4 X 1	25
191-243	1/4 X 1-1/4	25
191-244	1/4 X 1-1/2	25
191-246	1/4 X 2	25
191-248	1/4 X 2-1/2	25
191-250	1/4 X 3	25
191-252	1/4 X 3-1/2	25
191-253	1/4 X 4	25
191-254	1/4 X 5	25
191-255	1/4 X 6	25

**3/32" COTTER PINS**

Part #	SIZE	QTY
191-040	3/32 X 1/2	100
191-041	3/32 X 3/4	100
191-042	3/32 X 1	100
191-043	3/32 X 1-1/4	100
191-044	3/32 X 1-1/2	100
191-045	3/32 X 1-3/4	100
191-046	3/32 X 2	100

**7/64" COTTER PINS**

Part #	SIZE	QTY
191-062	7/64 X 1	100
191-064	7/64 X 1-1/2	100
191-066	7/64 X 2	100

**5/16" COTTER PINS**

Part #	SIZE	QTY
191-256	5/16 X 1	25
191-264	5/16 X 1-1/2	25
191-266	5/16 X 2	10
191-270	5/16 X 3	10
191-274	5/16 X 4	10
191-278	5/16 X 5	10

**3/8" COTTER PINS**

Part #	SIZE	QTY
191-284	3/8 X 3	10
191-286	3/8 X 4	10
191-288	3/8 X 5	10
191-290	3/8 X 6	10

**1/8" COTTER PINS**

Part #	SIZE	QTY
191-081	1/8 X 3/4	100
191-082	1/8 X 1	100
191-083	1/8 X 1-1/4	100
191-084	1/8 X 1-1/2	100
191-085	1/8 X 1-3/4	100
191-086	1/8 X 2	100
191-087	1/8 X 2-1/4	50
191-088	1/8 X 2-1/2	50
191-090	1/8 X 3	50

**5/32" COTTER PINS**

Part #	SIZE	QTY
191-092	5/32 X 3/4	100
191-093	5/32 X 1	100
191-094	5/32 X 1-1/4	100
191-095	5/32 X 1-1/2	100
191-097	5/32 X 2	50
191-099	5/32 X 2-1/2	50
191-101	5/32 X 3	50

**1/2" COTTER PINS**

Part #	SIZE	QTY
191-299	1/2 X 5	10
191-303	1/2 X 6	10

### HAIR COTTER PINS

Part #	DIAM	LENGTH	QTY
191-920	.026	3/8	25
191-924	.031	1/2	25
191-928	.046	15/16	25
191-932	.062	11/16	25
191-936	.062	53/64	25
191-940	.062	1"	25



### BRIDGE PINS

Part #	DIAM	LENGTH	QTY
192-004	.028	39/64	25
192-006	.032	7/16	25
192-008	.042	15/16	25
192-010	.042	1"	25
192-014	3/64	1"	25
192-015	3/64	31/32	25
192-016	1/16	1-9/16	25
192-017	3/64	1-3/32	25
192-018	5/64	1-7/8	25
192-024	3/32	1-9/16	25
192-028	3/32	1-5/8	25
192-030	3/32	2-5/16	25
192-052	1/8	1-1/4	25
192-054	1/8	1-5/16	25
192-058	1/8	2-1/2	10
192-060	1/8	2-7/8	10
192-066	5/32	3	10
192-068	3/16	3-1/4	10
192-070	3/16	3-3/4	5
192-085	1/4	4-3/16	5
192-088	5/16	4	5



### STAINLESS BRIDGE PINS

Part #	DIAM	LENGTH	QTY
192-135	.125	1-5/16	10
192-155	.148	2-15/6	10
192-175	.177	3-3/4	10

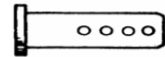


### BOW TIE COTTER PINS

Part #	DIAM	LENGTH	QTY
192-240	.072	1-3/8	20
192-245	.091	1-7/8	20
192-260	.120	2-3/4	10
192-270	.148	3-37/64	5
192-275	.177	3-37/64	5

### UNIVERSAL CLEVIS PINS

Part #	SIZE	TYPE	QTY
193-004	1/4 X 2	UNIVERSAL	10
193-005	1/4 X 3-1/2	UNIVERSAL	10
193-006	5/16 X 2	UNIVERSAL	10
193-008	3/8 X 2	UNIVERSAL	10
193-009	3/8 X 3-1/2	UNIVERSAL	10
193-010	7/16 X 2	UNIVERSAL	10
193-011	7/16 X 2-1/2	UNIVERSAL	10
193-012	1/2 X 2	UNIVERSAL	10
193-013	1/2 X 3	UNIVERSAL	10
193-014	5/8 X 2	UNIVERSAL	5
193-015	5/8 X 3	UNIVERSAL	5



### CLEVIS PINS

Part #	SIZE	QTY
193-026	3/16 X 1/2	10
193-027	3/16 X 5/8	10
193-028	3/16 X 3/4	10
193-030	3/6 X 1	10
193-032	3/16 X 1-1/4	10
193-034	3/16 X 1-1/2	10
193-036	1/4 X 3/4	10
193-038	1/4 X 1	10
193-040	1/4 X 1-1/4	10
193-042	1/4 X 1-1/2	10
193-044	1/4 X 1-3/4	10
193-046	1/4 X 2	10
193-050	5/16 X 1	10
193-052	5/16 X 1-1/4	10
193-054	5/16 X 1-1/2	10
193-056	5/16 X 1-3/4	10
193-058	5/17 X 1-7/8	10
193-060	5/16 X 2	10

193-064	3/8 X 1	10
193-066	3/8 X 1-1/4	10
193-068	3/8 X 1-1/2	10
193-070	3/8 X 1-3/4	10
193-072	3/8 X 2	10
193-076	7/16 X 1-1/4	10
193-078	7/16 X 1-1/2	10
193-080	7/16 X 1-3/4	10
193-082	7/16 X 2	10
193-084	1/2 X 1	10
193-085	1/2 X 1-1/4	10
193-086	1/2 X 1-1/2	10
193-088	1/2 X 1-3/4	10
193-090	1/2 X 2	10
193-092	1/2 X 2-1/2	5
193-094	1/2 X 3	5
193-096	5/8 X 2	5
193-097	5/8 X 2-1/2	5
193-098	5/8 X 3	5



**LOCKING CLEVIS PINS ROUND WIRE**

Part #	SIZE	TYPE	QTY
193-102	1/4 X 1-3/4	LOCKING PINS	5
193-104	1/4 X 2-1/2	LOCKING PINS	5



**LOCKING SNAP PINS**



**LOCKING CLEVIS PINS SQUARE WIRE**

Part #	SIZE	TYPE	QTY
193-140	1/4 X 2-1/4	LOCKING PINS	5
193-141	1/4 X 2-1/2	LOCKING PINS	5
193-142	1/4 X 3	LOCKING PINS	5
193-143	1/4 X 3-1/2	LOCKING PINS	5
193-144	5/16 X 2-1/4	LOCKING PINS	5
193-146	5/16 X 2-1/2	LOCKING PINS	5
193-148	3/8 X 2-1/4	LOCKING PINS	5
193-164	3/8 X 2-1/2	LOCKING PINS	5
193-168	3/8 X 3	LOCKING PINS	5



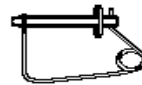
**BENT CLEVIS PINS**

Part #	SIZE	QTY
193-550	5/8 X 4-1/2	Ea
193-565	3/4 X 4-1/4	Ea
193-575	3/4 X 6-1/4	Ea
193-585	1 X 6-1/4	Ea



**LOCKING SNAP PINS**

J&B#	PIN DIAM	EFFECTIVE LENGTH	QTY
193-240	5/16	4	5
193-250	1/2	3-1/2	5



**BENT CLEVIS PINS**

Part #	SIZE	QTY
193-500	1/2 Pin With Clip	Ea



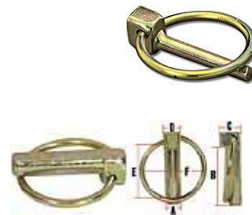
Part #	SIZE	QTY
193-504	1/2 X 2-1/2	2
193-506	1/2 X 3	2
193-508	5/8 X 4	2
193-550	5/8 X 4-1/2	2
193-565	3/4 X 4-1/4	2
193-575	3/4 X 6-1/4	2
193-585	1 X 6-1/4	2



SOLD WITHOUT BRIDGE PIN

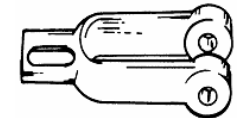
**LOCKING SNAP PINS**

J&B#	PIN DIAM	EFFECTIVE LENGTH	QTY
193-440	3/16	1	10
193-445	3/16	1-1/4	10
193-450	1/4	1-1/4	10
193-455	1/4	1-5/16	10
193-456	1/4	1-3/8	10
193-460	5/16	1-1/4	10
193-465	5/16	1-3/8	10
193-466	5/16	1-3/4	10
193-468	3/8	1-1/2	10
193-467	7/16	1-1/2	10
193-470	7/16	1-5/8	10
193-475	7/16	1-3/4	10

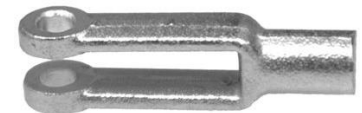


**YOKE PINS**

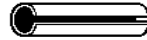
Part #	SIZE	QTY
192-880	1/2-20	Ea
192-900	5/8-18	Ea



Part #	SIZE	QTY
192-910	5/8-18	Ea



**SPRING PINS**



**1/16" SPRING PINS**

Part #	SIZE	QTY
194-220	1/16 X 1/4	50
194-222	1/16 X 3/8	50
194-224	1/16 X 1/2	50
194-228	1/16 X 3/4	50
194-230	1/16 X 1	50

**5/64" SPRING PINS**

Part #	SIZE	QTY
194-240	5/64 X 1/4	50
194-244	5/64 X 1/2	50
194-246	5/64 X 5/8	50
194-248	5/64 X 3/4	50
194-250	5/64 X 1	25

**3/32" SPRING PINS**

Part #	SIZE	QTY
194-264	3/32 X 1/2	50
194-268	3/32 X 3/4	50
194-270	3/32 X 1	25
194-274	3/32 X 1-1/2	25

**1/8" SPRING PINS**

Part #	SIZE	QTY
194-282	1/8 X 3/8	50
194-284	1/8 X 1/2	50
194-286	1/8 X 5/8	50
194-288	1/8 X 3/4	50
194-290	1/8 X 1	25
194-292	1/8 X 1-1/4	25
194-294	1/8 X 1-1/2	25
194-296	1/8 X 1-3/4	15
194-298	1/8 X 2	15

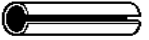
**5/32" SPRING PINS**

Part #	SIZE	QTY
194-314	5/32 X 1/2	50
194-318	5/32 X 3/4	50
194-320	5/32 X 1	25
194-322	5/32 X 1-1/4	25
194-324	5/32 X 1-1/2	25
194-328	5/32 X 2	25

**3/16" SPRING PINS**

Part #	SIZE	QTY
194-330	3/16 X 1/2	50
194-334	3/16 X 3/4	50
194-336	3/16 X 1	25
194-338	3/16 X 1-1/4	25
194-340	3/16 X 1-1/2	25
194-342	3/16 X 1-3/4	15
194-344	3/16 X 2	15

**SPRING PINS**



**7/32" SPRING PINS**

Part #	SIZE	QTY
194-350	7/32 X 3/4	25
194-352	7/32 X 1	15
194-354	7/32 X 1-1/4	15
194-356	7/32 X 1-1/2	15
194-358	7/32 X 1-3/4	15
194-360	7/32 X 2	15

**1/4" SPRING PINS**

Part #	SIZE	QTY
194-370	1/4 X 5/8	25
194-372	1/4 X 3/4	25
194-374	1/4 X 1	15
194-376	1/4 X 1-1/4	15
194-378	1/4 X 1-1/2	15
194-380	1/4 X 1-3/4	15
194-382	1/4 X 2	10
194-384	1/4 X 2-1/4	10
194-386	1/4 X 2-1/2	10
194-390	1/4 X 3	10

**5/16" SPRING PINS**

Part #	SIZE	QTY
194-410	5/16 X 3/4	10
194-412	5/16 X 1	10
194-414	5/16 X 1-1/2	10
194-418	5/16 X 2	10
194-420	5/16 X 2-1/2	10
194-424	5/16 X 3	10
194-428	5/16 X 4	10

**3/8" SPRING PINS**

Part #	SIZE	QTY
194-432	3/8 X 1	10
194-436	3/8 X 1-1/2	10
194-440	3/8 X 2	10
194-442	3/8 X 2-1/2	10
194-444	3/8 X 3	10

**7/16" SPRING PINS**

Part #	SIZE	QTY
194-456	7/16 X 1-1/2	10
194-462	7/16 X 2-1/2	10

**1/2" SPRING PINS**

Part #	SIZE	QTY
194-484	1/2 X 1-1/4	5
194-486	1/2 X 1-1/2	5
194-490	1/2 X 2	5
194-494	1/2 X 3	5
194-498	1/2 X 4	5

**ROLLED PINS**



Part #	SIZE	QTY
194-590	1/8 X 3/4	25
194-592	1/8 X 1	25
194-594	1/4 X 1-1/4	15
194-618	5/32 X 3/4	25
194-620	5/32 X 1	25
194-622	5/32 X 1-1/4	25
194-624	5/32 X 1-1/2	25
194-626	5/32 X 1-3/4	25
194-628	5/32 X 2	25
194-672	1/4 X 3/4	25
194-674	1/4 X 1	25
194-676	1/4 X 1-1/4	25
194-678	1/4 X 1-1/2	25
194-679	1/4 X 1-3/4	25
194-680	1/4 X 2	25
194-682	5/16 X 3/4	25
194-684	5/16 X 1	25
194-686	5/16 X 1-1/4	25
194-688	5/16 X 1-1/2	25
194-690	5/16 X 1-3/4	25
194-692	5/16 X 2	25
194-708	3/8 X 1	25
194-710	3/8 X 1-1/4	25
194-712	3/8 X 1-1/2	25
194-714	3/8 X 1-3/4	25
194-716	3/8 X 2	25
194-724	1/2 X 1-1/2	10
194-726	1/2 X 2	10
194-728	1/2 X 3	10
194-730	1/2 X 4	10
194-746	1/2 X 4-3/4	10
194-738	1/2 X 5	10
194-850	12 MM X 65	10

**WOODRUFF KEYS**



**3/32" WOODRUFF KEYS**

Part #	SIZE	QTY
195-010	3/32 X 1/2	25
195-012	3/32 X 5/8	25

**1/8" WOODRUFF KEYS**

Part #	SIZE	QTY
195-016	1/8 X 1/2	25
195-018	1/8 X 5/8	25

**5/32" WOODRUFF KEYS**

Part #	SIZE	QTY
195-024	5/32 X 5/8	25
195-026	5/32 X 3/4	25
195-028	5/32 X 7/8	20

**3/16" WOODRUFF KEYS**

Part #	SIZE	QTY
195-030	3/16 X 3/4	25
195-032	3/16 X 7/8	20
195-034	3/16 X 1	20

**1/4" WOODRUFF KEYS**

Part #	SIZE	QTY
195-038	1/4 X 3/4	20
195-040	1/4 X 7/8	20
195-046	1/4 X 1	15
195-048	1/4 X 1-1/8	10
195-050	1/4 X 1-1/4	10

**5/16" WOODRUFF KEYS**

Part #	SIZE	QTY
195-072	5/16 X 1	10
195-074	5/16 X 1-1/8	10
195-076	5/16 X 1-1/4	10

**3/8" WOODRUFF KEYS**

Part #	SIZE	QTY
195-080	3/8 X 1	10
195-082	3/8 X 1-1/4	10

**E-RINGS**



Part #	Part #	QTY
196-102	3/32	100
196-104	1/8	100
196-106	5/32	100
196-108	3/16	100
196-110	7/32	100
196-112	1/4	50
196-114	5/16	50
196-116	3/8	25
196-118	7/16	25
196-120	1/2	25
196-122	9/16	25
196-124	5/8	25
196-126	3/4	25
196-128	7/8	20
196-130	1	20

**INT / EXT SNAP RINGS**



**INTERNAL**

Part #	SIZE	QTY
197-306	1/4	50
197-308	5/16	50
197-312	3/8	25
197-314	7/16	25
197-316	1/2	25
197-320	9/16	25
197-322	5/8	20
197-323	11/16	15
197-324	3/4	15
197-325	13/16	15
197-326	7/8	15
197-328	1	10
197-330	1-1/16	10
197-332	1-1/8	10
197-334	1-3/16	10
197-336	1-1/4	10
197-338	1-5/16	10
197-340	1-3/8	10
197-342	1-7/16	10
197-344	1-1/2	10
197-346	1-5/8	10
197-348	1-3/4	10



**EXTERNAL**

Part #	SIZE	QTY
197-404	3/16	50
197-406	1/4	50
197-407	9/32	50
197-408	5/16	50
197-410	11/32	50
197-412	3/8	25
197-414	7/16	25
197-416	1/2	25
197-420	9/16	20
197-422	5/8	20
197-423	11/16	15
197-424	3/4	15
197-426	7/8	15
197-428	1	10
197-430	1-1/16	10
197-432	1-1/8	10
197-434	1-3/16	10
197-436	1-1/4	10
197-438	1-5/16	10
197-440	1-3/8	10
197-442	1-7/16	10
197-444	1-1/2	10
197-446	1-5/8	10
197-448	1-3/4	10
197-452	2	10
197-456	2-1/8	10
197-460	2-1/4	10
197-464	2-3/8	10
197-468	2-1/2	10

O- RINGS**1/16" O - RINGS**

Part #	INT	EXT	QTY
198-006	1/8	1/4	25
198-007	5/32	9/32	25
198-008	3/16	5/16	25
198-009	7/32	11/32	25
198-010	1/4	3/8	25
198-011	5/16	7/16	25
198-012	3/8	1/2	25
198-013	7/16	9/16	15
198-014	1/2	5/8	15
198-015	9/16	11/16	15
198-016	5/8	3/4	15
198-017	11/16	13/16	15
198-018	3/4	7/8	15
198-019	13/16	15/16	15
198-020	7/8	1	15
198-021	15/16	1-1/16	15
198-022	1	1-1/8	10
198-023	1-1/16	1-3/16	10
198-024	1-1/8	1-1/4	10
198-025	1-3/16	1-5/16	10
198-026	1-1/4	1-3/8	10
198-027	1-5/16	1-3/8	10
198-028	1-3/8	1-1/2	10
198-029	1-1/2	1-5/8	10
198-030	1-5/8	1-3/4	5
198-031	1-3/4	1-7/8	5
198-032	1-7/8	2	5
198-033	2	2-1/8	5
198-034	2-1/8	2-1/4	5
198-035	2-1/4	2-3/8	5
198-036	2-3/8	2-1/2	5
198-037	2-1/2	2-5/8	5
198-038	2-5/8	2-3/4	5
198-039	2-3/4	2-7/8	5
198-040	2-7/8	3	5

**3/32" O - RINGS**

Part #	INT	EXT	QTY
198-108	1/4	7/16	25
198-109	5/16	1/2	25
198-110	3/8	9/16	25
198-111	7/16	5/8	25
198-112	1/2	11/16	25
198-113	9/16	3/4	10
198-114	5/8	13/16	10
198-115	11/16	7/8	10
198-116	3/4	15/16	10
198-117	13/16	1	10
198-118	7/8	1-1/16	10
198-119	15/16	1-1/8	10
198-120	1	1-3/16	10
198-121	1-1/16	1-1/4	10
198-122	1-1/8	1-5/16	10
198-123	1-3/16	1-3/8	10
198-124	1-1/4	1-7/16	10
198-125	1-5/16	1-1/2	10
198-126	1-3/8	1-9/16	10
198-127	1-7/16	1-5/8	5
198-128	1-1/2	1-11/16	5
198-129	1-9/16	1-3/4	5
198-130	1-5/8	1-13/16	5
198-132	1-3/4	1-15/16	5
198-134	1-7/8	2-1/16	5
198-136	2	2-3/16	5
198-138	2-1/8	2-5/16	5
198-140	2-1/4	2-7/16	5
198-142	2-3/8	2-9/16	5
198-144	2-1/2	2-11/16	5
198-147	2-11/16	2-7/8	5

O- RINGS**1/8" O - RINGS**

Part #	INT	EXT	QTY
198-204	3/8	5/8	10
198-205	7/16	11/16	10
198-206	1/2	3/4	10
198-207	9/16	13/16	10
198-208	5/8	7/8	10
198-209	11/16	15/16	10
198-210	3/4	1	10
198-211	13/16	1-1/16	10
198-212	7/8	1-1/8	10
198-213	15/16	1-3/16	10
198-214	1	1-1/4	10
198-215	1-1/16	1-5/16	10
198-216	1-1/8	1-3/8	10
198-217	1-3/16	1-7/16	10
198-218	1-1/4	1-1/2	10
198-219	1-5/16	1-9/16	10
198-220	1-3/8	1-5/8	10
198-221	1-7/16	1-11/16	10
198-222	1-1/2	1-3/4	10
198-223	1-5/8	1-7/8	5
198-224	1-3/4	2	5
198-225	1-7/8	2-1/8	5
198-226	2	2-1/4	5
198-227	2-1/8	2-3/8	5
198-228	2-1/4	2-1/2	5
198-229	2-3/8	2-5/8	5
198-230	2-1/2	2-3/4	5
198-232	2-3/4	3	5

**3/16" O - RINGS**

Part #	INT	EXT	QTY
198-325	1-1/2	1-7/8	5
198-326	1-5/8	2	5
198-327	1-3/4	2-1/8	5
198-328	1-7/8	2-1/4	5
198-329	2	2-3/8	5
198-330	1-1/8	2-1/2	5
198-331	2-1/4	2-5/8	5
198-332	2-3/8	2-3/4	5
198-333	2-1/2	2-7/8	5
198-334	2-5/8	3	5
198-335	2-3/4	3-1/8	5
198-336	2-7/8	3-1/4	5
198-337	3	3-3/8	5
198-338	3-1/8	3-1/2	5
198-339	3-1/4	3-5/8	5
198-340	3-3/8	3-3/4	5
198-341	3-1/2	3-7/8	5
198-342	3-5/8	4	5
198-343	3-3/4	4-1/8	5
198-344	3-7/8	4-1/4	5
198-345	4	4-3/8	5
198-346	4-1/8	4-1/2	5
198-347	4-1/4	4-5/8	5

**METRIC O- RINGS**



**2.0" O - RINGS**

Part #	INT	EXT	QTY
198-706	3 M	7 M	10
198-708	4 M	8 M	10
198-710	5 M	9 M	10
198-712	6 M	10 M	10
198-714	7 M	11 M	10
198-716	8 M	12 M	10
198-718	9 M	13 M	10
198-720	10 M	14 M	10
198-722	11 M	15 M	10
198-724	12 M	16 M	10
198-726	14 M	18 M	10
198-740	28 M	32 M	10

**2.5" O - RINGS**

Part #	INT	EXT	QTY
198-750	10 M	15 M	10
198-754	11 M	16 M	10
198-758	12 M	17 M	10
198-760	14 M	19 M	10
198-764	16 M	21 M	10
198-768	17 M	22 M	10
198-772	19 M	24 M	10

**3.0" O - RINGS**

Part #	INT	EXT	QTY
198-840	19 M	25 M	5
198-844	20 M	26 M	5
198-848	22 M	28 M	5
198-852	24 M	30 M	5
198-856	25 M	31 M	5
198-860	27 M	33 M	5
198-864	28 M	34 M	5
198-868	30 M	36 M	5
198-872	32 M	38 M	5
198-876	33 M	39 M	5
198-878	35 M	41 M	5
198-880	36 M	42 M	5
198-882	38 M	44 M	5

**4.0" O - RINGS**

Part #	INT	EXT	QTY
198-940	38 M	46 M	5
198-944	41 M	49 M	5
198-948	44 M	52 M	5

**SQUARE & FLAT KEY STOCK**



**12" KEY STOCK**

Part #	SIZE	QTY
199-004	1/8	EA
199-006	5/32	EA
199-008	3/16	EA
199-012	1/4	EA
199-014	5/16	EA
199-016	3/8	EA
199-018	7/16	EA
199-019	1/2	EA
199-020	9/16	EA
199-022	5/8	EA
199-024	3/4	EA
199-026	7/8	EA
199-028	1	EA

**12" FLAT KEY STOCK**

Part #	SIZE	QTY
199-150	1/8 X 3/16	EA
199-154	1/8 X 1/4	EA
199-158	3/16 X 1/4	EA
199-162	3/16 X 5/16	EA
199-166	3/16 X 3/8	EA
199-170	1/4 X 5/16	EA
199-176	1/4 X 3/8	EA
199-180	3/16 X 1/2	EA
199-184	1/4 X 1/2	EA
199-188	5/16 X 3/8	EA
199-192	5/16 X 1/2	EA
199-196	3/8 X 1/2	EA

**40 MM METRIC KEY STOCK**

Part #	SIZE	QTY
200-106	4 MM	EA
200-110	6 MM	EA
200-114	8 MM	EA
200-118	10 MM	EA
200-122	12 MM	EA

**POP RIVETS**

**ALUM / STEEL 1/8" POP RIVETS**



Alum	Steel	SIZE	IND #	QTY
201-002	201-012	1/8	4-2	100
201-004	201-014	1/8	4-4	100
201-006		1/8	4-5	100
201-008	201-018	1/8	4-6	100
201-010	201-020	1/8	4-8	100

**ALUM / STEEL 5/32" POP RIVETS**

Alum	Steel	SIZE	IND #	QTY
201-021		5/32	5-2	100
201-022		5/32	5-4	100
201-024		5/32	5-6	100
201-026		5/32	5-8	100

**ALUM / STEEL 3/16" POP RIVETS**

Alum	Steel	SIZE	IND #	QTY
201-032	201-132	3/16	6-2	100
201-034	201-134	3/16	6-4	100
201-035	201-136	3/16	6-6	100
201-036	201-138	3/16	6-8	100
201-037		3/16	6-10	100
201-038	201-142	3/16	6-12	100

**ALUM RIVIT / STEEL SHANK HEAVY DUTY RIVIT**

Alum	SIZE	IND #	QTY
201-148	3/16	6-2	100



**ALUM RIVIT / STEEL SHANK HEAVY DUTY RIVIT**

Alum	Steel	SIZE	IND #	QTY
201-040		1/4	8-6	100
201-225	201-160	1/4	8-8	100
	201-280	1/4	8-16	50



**LARGE FLANGE POP RIVETS**

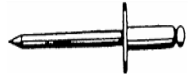
**ALUM / STEEL 3/16" LARGE FLANGE**



Alum	Steel	SIZE	IND #	QTY
201-204		3/16	6-4	50
201-206		3/16	6-6	50
201-208	201-238	3/16	6-8	250
201-210		3/16	6-8	50
201-222		3/16	6-10	50
201-212	201-250	3/16	6-12	50
	201-255	1/4	8-16	25

**ALUM RIVIT / STEEL SHANK HEAVY DUTY LARGE FLANGE RIVIT**

Alum	SIZE	IND #	QTY
201-218	3/16	6-6	50
201-222	3/16	6-10	50



**STEEL 1/4" H/D RIVIT**

Part #	SIZE	IND #	TYPE	MATERIAL	QTY
201-262	1/4	.030 / .140	WINDOW	STEEL	25
201-270	1/4	.090 / .115	DOOR	STEEL	25
201-274	1/4		WINDOW	ALUM	25

**PEEL RIVETS**

**STEEL 1/4" H/D RIVIT**

Part #	SIZE	GRIP	QTY
201-275	1/4	1/4 - 3/4	25
201-276	1/4	3/16 - 1/4	25
201-278	1/4	33/64 - 19/62	25

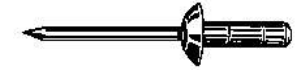


### MULTI-GRIP BLIND RIVETS



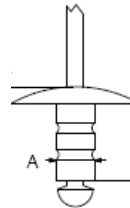
Alum	SIZE	Auveco	POP #	GRIP	QTY
201-328	1/8	18742	AD41-43BS	1/32 – 3/16	100
201-332	1/8	19025	AD43-45BS	5/32 – 5/16	100
201-336	1/8	19026	AD45-47BS	1/4 – 7/16	100
201-340	5/32	18743	AD52-54BS	3/64 – 1/4	100
201-344	5/32	19027	AD53-55BS	1/8 – 5/16	50
201-348	3/16	18744	AD62-64BS	1/16 – 1/4	50
201-352	3/16	19028	AD63-66BS	3/16 – 3/8	50
201-356	3/16	19029	AD66-68BS	1/4 – 1/2	50
201-360	3/16	19030	AD68-612BS	7/16 – 3/4	50
201-364	1/4	19031	AD82-86BS	5/64 – 11/32	25

### AVEX BRAZIER HEAD RIVETS



Alum	SIZE	Auveco	GRIP	QTY
201-420	3/16	17432	1/16 – 1/4	50
201-424	3/16	17433	3/16 – 7/16	50

### MULTI-GRIP BLIND RIVETS LARGE FLANGE



Alum	SIZE	Auveco	POP #	GRIP	QTY
201-368	1/8	19033	AD41-43BSLF	3/64 – 3/16	100
201-372	1/8	19034	AD43-45BSLF	5/32 – 5/16	100
201-376	5/32	17468	AD52-54BSLF	3/64 – 1/4	50
201-380	3/16	19036	AD62-64BSLF	1/16 – 1/4	50
201-384	3/16	19037	AD66-68BSLF	1/4 – 1/2	50

### KLAMP-TITE RIVETS



Alum	SIZE	Auveco	GRIP	QTY
201-432	3/16	13766	3/64 – 1/4	50
201-436	3/16	13767	3/16 – 3/8	50
201-448	1/4	13769	3/64 – 1/4	25
201-450	1/4	13770	3/16 – 3/8	25

**SPLIT LARGE FLANGE**



Alum	SIZE	Auveco	GRIP	QTY
201-470	1/4	17639	3/16 – 3/8	15

Split-Type Rivet Diameter: 1/4" Grip: 3/16"-3/8" Flange Dia: 11/16"

**MAGNA-GRIP RIVITS**



Part #	SIZE	IND #	TYPE	QTY
202-150	1/4	MGRR8-20G	STEEL	100
202-155	1/4	MGC-RU8	STEEL	100
202-160	1/4	MGC-R8UL	STEEL	100

**CLOSED – END RIVITS**



Alum	SIZE	Auveco	GRIP	QTY
201-510	3/16	17414	1/16-1/8	50
201-514	3/16	17415	1/8-1/4	50
201-518	3/16	17416	1/4-3/8	50
201-530	1/4		3/16-1/4	50
201-534	1/4		1/4-3/8	50

**MONOBOLT RIVITS**



Part #	SIZE	IND #	TYPE	QTY
202-050	3/16	SSPV-64	STEEL	100
202-054	3/16	SSPV-E67	STEEL	100
202-075	1/4	SSPV-86	STEEL	100
202-078	1/4	SSPV-E810	STEEL	100

**T- RIVITS INTERLOCK**

Part #	SIZE	IND #	TYPE	QTY
201-110	3/16	SSPI-64	STEEL	100
202-084	1/4	MGLP-U8-6	ALUM	50
202-090	1/4	MGLP-U8-10	STEEL	50
202-120	1/4	MGLP-R8-4	STEEL	50
202-124	1/4	MGLP-R8-6	STEEL	50
202-125	1/4	SSPI-8-6	STEEL	50

**STAINLESS MONOBOLT RIVITS**



**STAINLESS 1/4" H/D RIVIT**

Part #	SIZE	IND #	QTY
202-215	3/16	SSB6-8S	25
202-225	3/16	SSD62SSBSS	25
202-255	1/4	MGLP-U8 - 6	25
202-260	1/4	MGLP-U8 - 10	25

## 203: RIVIT TOOLS

### RIVIT GUN NOSE PIECES

Part #		QTY
200-945	3/16	MONO-BOLT
200-950	1/4	MONO-BOLT
200-955	1/4	INTERLOCK



### RIVIT TOOLS AND NUT SETTERS

#### PLASTIC RIVIT SETTING TOOL

Part #	QTY
202-280	RIVIT TOOL



#### POP RIVIT TOOL

Part #	QTY
202-271	RIVIT TOOL



#### POP RIVIT TOOL

Part #	QTY
202-273	RIVIT TOOL



## H/D NUTSERT TOOL / RIVIT / MONOBOLTS



Part #	ITEM
202-999	HEAVY DUTY NUTSERT/MONOBOLT TOOL 8-32, 10-24, 10-32, 1/4-20, 5/16-18, 3/8-16



Part #	ITEM
203-000	HEAVY DUTY NUTSERT METRIC ARBORS 4MM, 5MM, 6MM, 8MM, 10MM

No tool Adapters only

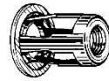
Part #	SIZE
202-293	8-32
202-294	10-24
202-295	10-32
202-296	1/4-20
202-297	5/16-18
202-298	3/8-16



## 203: NUTSERTS

### LARGE FLANGE SERRATED NUTSERTS

Part #	SIZE	QTY
203-001	6-32	25
203-002	8-32	25
203-004	10-24	25
203-006	10-32	25
203-008	1/4-20	25
203-010	5/16-18	10
203-012	3/8-16	10
203-016	5 X .70	25
203-020	6 X .80	25
203-022	8 X 1.25	10
203-024	10 X 1.5	10



### JACK NUTS

Part #	SIZE	AUVECO	QTY
203-050	10-24	13004	25
203-060	1/4-20	13006	25



### JACK NUT SETTING TOOL

Part #	QTY
203-040	RIVIT TOOL



### JACK NUT & STAINLESS BOLT

Part #	SIZE	AUVECO	QTY
203-075	1/4-20	14977	10

## RUBBER WELL NUTS



Part #	SIZE	HEAD O.D.	AUVECO	QTY
203-135	6-32	.452	13006	10
203-140	8-32	.750	13005	10
203-145	10-24	.562	16240	10
203-150	10-32	.500	13007	10
203-153	10-32	.643	13008	10
203-155	10-32	.562	13009	10
203-160	10-32	.750	17586	10
203-162	1/4-20	.625	13004	10
203-175	1/4-20	.740	13010	10
203-180	5/16-18	.875	13011	10
203-224	6 X 1.00	.630	13003	10
203-228	6 X 1.00	.625	16251	10
203-238	8 X 1.25	.750	16256	10



## HELICOILS



### HELICOILS USS

Part #	SIZE	QTY
204-500	10-24	10
204-502	10-32	10
204-504	1/4-20	5
204-506	5/16-18	5
204-507	3/8-16	5
204-508	7/16-14	5
204-510	1/2-13	5
204-511	9/16-12	2
204-512	5/8-11	2
204-514	3/4-10	2
204-516	7/8-9	2
204-518	1-8	2

### KITS EA

Part #	SIZE
204-700	10-24
204-702	10-32
204-704	1/4-20
204-706	5/16-18
204-707	3/8-16
204-708	7/16-14
204-710	1/2-13
204-711	9/16-12
204-712	5/8-11
204-714	3/4-10
204-716	7/8-9
204-718	1-8

### HELICOILS SAE

Part #	SIZE	QTY
204-535	1/4-28	5
204-536	5/16-24	5
204-537	3/8-24	5
204-538	7/16-20	5
204-540	1/2-20	5
204-541	9/16-18	2
204-542	5/8-18	2
204-543	3/4-16	2
204-544	7/8-14	2
204-545	1-14	2

### KITS EA

Part #	SIZE
204-720	10-32
204-735	1/4-28
204-736	5/16-24
204-737	3/8-24
204-738	7/16-20
204-739	1/2-20
204-740	9/16-18
204-741	5/8-18
204-742	3/4-16
204-743	7/8-14
204-744	1-14

### HELICOILS METRIC

Part #	SIZE	QTY
204-628	6 X 1.00	5
204-632	8 X 1.25	5
204-636	10 X 1.50	5
204-640	12 X 1.75	5
204-644	14 X 2.00	2
204-660	16 X 2.00	2

### KITS EA

Part #	SIZE
204-778	6 X 1.00
204-780	8 X 1.25
204-782	10 X 1.50
204-784	12 X 1.75
204-790	14 X 2.00
204-794	16 X 2.00

## KEENSERTS



### KEENSERTS USS

Part #	SIZE	QTY
204-812	10-24	5
204-816	10-32	5
204-820	1/4-20	5
204-824	5/16-18	5
204-828	3/8-16	5
204-832	7/16-14	5
204-836	1/2-13	3
204-846	5/8-11	2
204-848	3/4-10	2
204-850	7/8-9	2
204-852	1-8	2

### KEENSERTS SAE

Part #	SIZE	QTY
204-822	1/4-28	5
204-826	5/16-24	5
204-830	3/8-24	5
204-834	7/16-20	5
204-838	1/2-20	3
204-847	5/8-18	2
204-849	3/4-16	2
204-851	7/8-14	2
204-853	1-14	2

### Keenserts Metric

Part #	SIZE	QTY
204-855	5 X .80	5
204-857	6 X 1.00	5
204-861	8 X 1.25	5
204-865	8 X 1.00	5
204-869	10 X 1.50	2
204-872	10 X 1.25	2
204-876	12 X 1.75	2
204-882	14 X 2.00	2



### KEENSERT TOOL

Part #	QTY
AV12394	1/4-20 & 1/4-28
AV12395	5/16-18 & 5/16-24
AV12396	3/8-16 & 3/8-24
AV12397	7/16-14 & 7/16-20
AV12399	5 X .80 MM
AV12400	6-1.00 MM
AV16163	5/8-11 H.D. & 5/8-18 H.D.
AV16164	3/4-10 H.D. & 3/4-16 H.D.

### MASTER ROLLER LINKS



Part #	SIZE	QTY
211-503	# 35	4
211-505	# 40	4
211-507	# 41	4
211-510	# 50	4
211-515	# 60	3

### OFFSET ROLLER LINKS



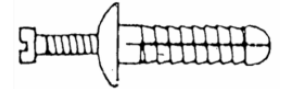
Part #	SIZE	QTY
211-553	# 35	4
211-555	# 40	4
211-557	# 41	4
211-560	# 50	4
211-565	# 60	3

### ROLLER-CHAIN



Part #	SIZE	QTY
212-595	# 35 X 10'	EA
212-600	# 40 X 10'	EA
212-602	# 41 X 10'	EA
212-610	# 50 X 10'	EA
212-620	# 60 X 10'	EA

### NAILON PIN DRIVE ANCHORS



#### **NYLON MUSHROOM HEAD**

Part #	MFG #	SIZE	QTY
215-608	N18100M	3/16 X 1	100
215-620	NS25100M	1/4 X 3/4	100
215-622	NS25112M	1/4 X 1	100
215-624	NS25200M	1/4 X 1-1/2	100
215-626		1/4 X 2	100
215-630		1/4 X 3	100

#### **ZINC MUSHROOM HEAD**

Part #	MFG #	SIZE	QTY
215-642	ZNS25100M	1/4 X 1	100
215-644	ZNS25112M	1/4 X 1-1/2	100
215-646	ZNS25200M	1/4 X 2	100

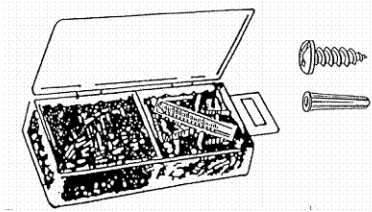
#### **NYLON TAP-IT WASHER**

Part #	SIZE	QTY
215-590	1/4 X 1-1/2	100



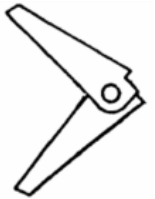
**ANCHOR KITS**

Part #	SIZE	QTY
215-140	#8 - #10	KIT
215-141	#10 - #12	KIT



**TOGGLE WINGS**

Part #	SIZE	QTY
215-225	10-24	50
215-230	1/4-20	50
215-233	5/16-18	25
215-235	3/8-16	25
215-239	1/2-13	10



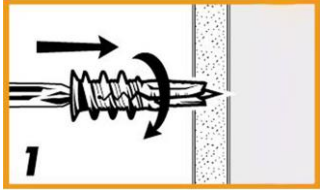
**PLASTIC ANCHORS**

Part #	SIZE	COLOR	QTY
215-148	6-8	RED	100
215-149	8-10	RED	100
215-150	10-12	BLUE	100
215-152	14-16	BLUE	100

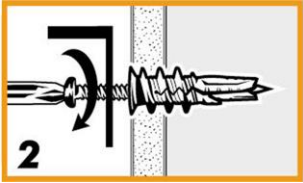


## DRY WALL ANCHORS

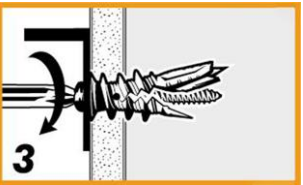
Using #2 Phillips screwdriver, press anchor tip slightly into drywall. Applying pressure, turn anchor until flush with drywall. Do not overtighten.



Insert screw through item to be hung and turn into anchor.



Anchor will “click” once when the screw is halfway in to indicate that the anchor is secure. Continue tightening until flush. Item thickness 1/4" or less with screw provided.



- Save time with E-Z's self-drilling anchors; No drills or Pre-drilling are necessary!
- Have confidence with E-Z's strong holding power! Up to 100 lbs. in shear applications.
- Anchors install flush to the wall to prevent wobbling and loose fixtures.
- Versatile product line covers multiple applications from lightweight to heavyweight

### CAST METAL DRY WALL ANCHORS

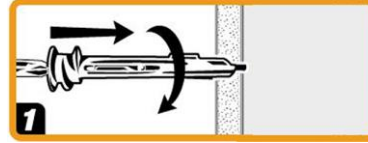
Part #	SCREW SIZE	ANCHOR O.D	ANCHOR LENGTH	QTY
215-508	6 X 1-1/4	7/16	1-1/4	50
215-512	8 X 1-1/4	1/2	1-5/8	50

### NYLON DRY WALL ANCHORS

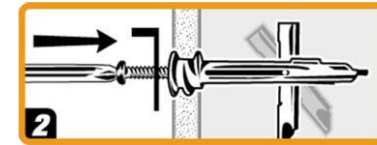
Part #	SCREW SIZE	ANCHOR O.D	ANCHOR LENGTH	QTY
215-525	6 X 1-1/4	7/16	1-1/4	50
215-528	8 X 1-1/4	1/2	1-5/8	50

## TOGGLE LOCK DRY WALL ANCHORS

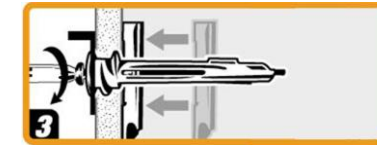
Using #2 Phillips screwdriver press anchor tip slightly into drywall. Applying pressure, turn anchor until flush with drywall and arrows on head of anchor point up and down. Do not overtighten.



Push screw through item to be hung and halfway into anchor to engage toggle bar. Item thickness 3/4" or less with screw provided.



Tighten screw flush and continue turning. Screw stops when toggle bar secures against wall.



### Toggle Lock

- Made with our exclusive TOGGLE LOCK technology to simplify installation and hang up to 100 pounds! Versatility for multiple applications - hangs up to 100 pounds in wall and 50 pounds in ceiling.\*
- Simple, easy installation, especially when compared to ordinary toggle bolts.
- No messy pre-drilling.
- No difficult pre-assembly.
- Fewer installation steps.
- Superior one-piece construction prevents losing pieces behind wall.
- \* Refer to product specs for limitations and restrictions.

### CAST METAL DRY WALL ANCHORS

Part #	SCREW SIZE	ANCHOR O.D	ANCHOR LENGTH	QTY
215-535	8 X 2-1/4	9/16	2-1/2	25

### NYLON DRY WALL ANCHORS

Part #	SCREW SIZE	ANCHOR O.D	ANCHOR LENGTH	QTY
215-537	8 X 2-1/4	9/16	2-1/2	25

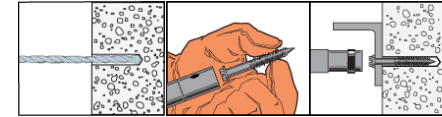
**TAP-CONN HEX HEAD ANCHORS**



Part #	MFG #	SIZE	QTY
216-530	TTN18114H	3/16 X 1-1/4	100
216-534	TTN18134H	3/16 X 1-3/4	100
216-538	TTN18214H	3/16 X 2-1/4	100
216-542	TTN18234H	3/16 X 2-3/4	100
216-546	TTN18314H	3/16 X 3-1/4	100
216-550	TTN18334H	3/16 X 3-3/4	100
216-554	TTN18400H	3/16 X 4	100
216-570	TTN25114H	1/4 X 1-1/4	100
216-574	TTN25134H	1/4 X 1-3/4	100
216-578	TTN25214H	1/4 X 2-1/4	100
216-582	TTN25234H	1/4 X 2-3/4	100
216-586	TTN25314H	1/4 X 3-1/4	100
216-590	TTN25314H	1/4 X 3-3/4	100
215-596		1/4 X 4	100

**NOTE: EACH KIT INCLUDES 1 DRILL**

**TAP-CONN PHIL HEAD ANCHORS**



Part #	MFG #	SIZE	QTY
216-630	TTN18114PH	3/16 X 1-1/4	100
216-634	TTN18134PH	3/16 X 1-3/4	100
216-638	TTN18214PH	3/16 X 2-1/4	100
216-642	TTN18234PH	3/16 X 2-3/4	100
216-646	TTN18314PH	3/16 X 3-1/4	100
216-650	TTN18334PH	3/16 X 3-3/4	100
216-654	TTN18400PH	3/16 X 4	100
216-670	TTN25114PH	1/4 X 1-1/4	100
216-674	TTN25134PH	1/4 X 1-3/4	100
216-678	TTN25214PH	1/4 X 2-1/4	100
216-682	TTN25234PH	1/4 X 2-3/4	100
216-686	TTN25314PH	1/4 X 3-1/4	100
216-690	TTN25334PH	1/4 X 3-3/4	100
216-694	TTN25400PH	1/4 X 4	100

**NOTE: EACH KIT INCLUDES 1 DRILL**

**TAP CONN DRILL**

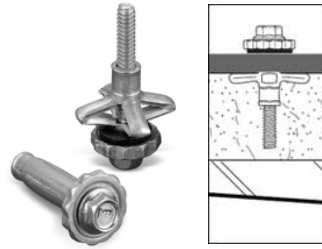


Part #	MFG #	SIZE	DRILL	QTY
216-512	MDB15312	5/32 X 3-1/2	TO 1-3/4	EA
216-514	MDB15412	5/32 X 4-1/2	TO 3-1/4 TO 4	EA
216-516	MDB15512	5/32 X 5-1/2		EA
216-520	MDB18312	3/16 X 3-1/2	TO 1-3/4	EA
216-522	MDB18412	3/16 X 4-1/2	TO 3-1/4 TO 4	EA
216-524	MDB18512	3/16 X 5-1/2		EA

**ANCHORS**

**FAB LOCK ANCHORS**

Part #	SIZE	QTY
217-120	10-8	100



**STUD ANCHORS**

**SHORT LAG SCREW EXPANSION ANCHORS**

Part #	MFG #	SIZE	QTY
217-742	LSES25S	1/4 X 1	100
217-744	LSES31S	5/16 X 1-1/4	100
217-746	LSES37S	3/8 X 1-3/4	50
217-748	LSES50S	1/2 X 2	25



**LONG LAG SCREW EXPANSION ANCHORS**

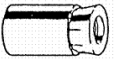
Part #	MFG #	SIZE	QTY
217-762	LSES25L	1/4 X 1-1/2	50
217-764	LSES31L	5/16 X 1-3/4	50
217-766	LSES37L	3/8 X 2-1/2	50
217-768	LSES50L	1/2 X 1-3/4	25

**SLEEVE ANCHORS**

Part #	SIZE	QTY
217-220	1/4 X 1-3/8	100
217-228	5/16 X 1-1/2	100
217-235	3/8 X 1-7/8	50
217-238	3/8 X 3	50
217-255	3/8 X 3-3/4	25
217-265	1/2 X 3	25



**ANCHORS**



**WEDGE ANCHORS**



**WEDGE ANCHORS**

Part #	SIZE	QTY
217-520	3/8 X 2-3/4	50
217-530	3/8 X 3-1/2	50
217-540	3/8 X 5	50
217-545	1/2 X 2-3/4	25
217-550	1/2 X 4-1/4	25
217-560	1/2 X 5-1/2	25
217-585	5/8 X 3-1/2	20
217-590	5/8 X 6	20

**GALVANIZED WEDGE ANCHORS**

Part #	SIZE	QTY
217-650	1/2 X 4-1/2	25

**WIRE ROPE CLAMPS**

Part #	SIZE	QTY
218-332	1/16	10
218-336	3/32	10
218-340	1/8	10
218-342	3/16	10
218-344	1/4	10
218-346	5/16	5
218-348	3/8	5
218-349	7/16	5
218-350	1/2	5
218-352	5/8	2
218-354	3/4	2
218-356	7/8	EA



**NOT FOR CRANE ROPE**

**ALUM OVAL CRIMP SLEEVES**

Part #	SIZE	QTY
223-502	1/16	10
223-506	3/32	10
223-508	1/8	10
223-510	5/32	10
223-514	3/16	10
223-518	1/4	10



**COATED GALVANIZED AIR CRAFT CABLE**

Part #	SIZE	QTY
223-545	1/16 X 3/32	100'
223-550	3/32 X 1/8	100'
223-556	1/8 X 3/16	100'
223-564	3/16 X 1/4	100'

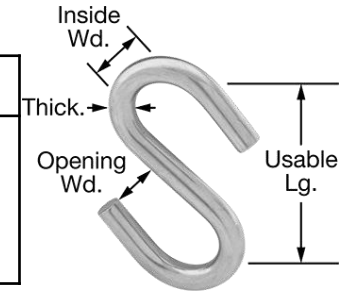


**UNCOATED GALVANIZED AIR CRAFT CABLE**

Part #	SIZE	QTY
223-572	1/16	100'
223-576	3/32	100'
223-580	1/8	100'
223-584	3/16	100'



Part #	Thick	Opening	Usable Length	Inside Width	QTY
223-???	1/16	3/16	5/8	1/4	10
					10
					10
					10
					10
					10



USS / SAE BOLT THREAD LENGTH GUIDE

STANDARD THREAD LENGTHS

<b>DIAM</b>	<b>FULL THREAD UP TO</b>	<b>BOLTS 6" AND SHORTER</b>	<b>BOLTS OVER 6"</b>
1/4"	1"	3/4"	1"
5/16"	1-1/4"	7/8"	1-1/8"
3/8"	1-1/4"	1"	1-1/4"
7/16"	1-1/2"	1-1/8"	1-3/8"
1/2"	1-3/4"	1-1/4"	1-1/2"
5/8"	2"	1-1/2"	1-3/4"
3/4"	2-1/2"	1-3/4"	2"
7/8"	2-3/4"	2"	2-1/4"
1"	3"	2-1/4"	2-1/2"

U  
S  
S



$3/16$



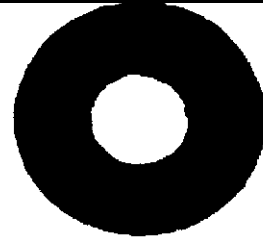
$1/4$



$5/16$



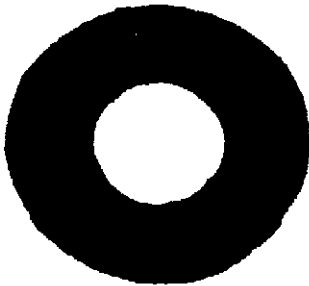
$3/8$



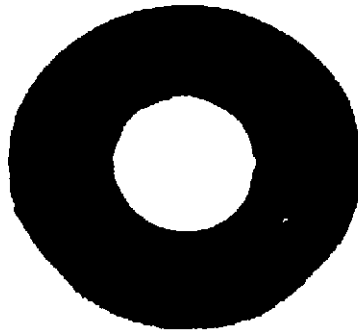
$7/16$



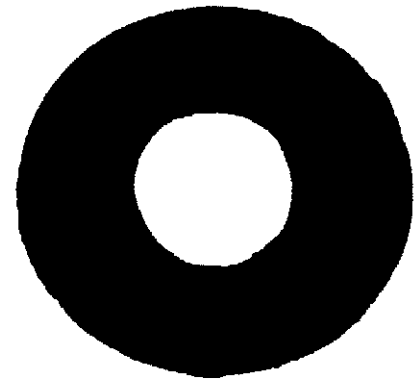
$1/2$



$9/16$



$5/8$



$3/4$

S  
A  
E



$3/16$



$1/4$



$5/16$



$3/8$



$7/16$



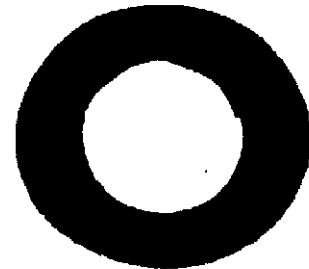
$1/2$



$9/16$



$5/8$



$3/4$